

# HOTELS

Project Orange  
Architecture and Interiors

CHEEKY!  
SEE YOU  
YOU NICE  
STUPID  
BOY  
LIKE THAT!

UNITED KINGDOM IRELAND MOROCCO INDIA RUSSIA SWITZERLAND AUSTRALIA

2012 EDITION

## INTRODUCTION

Project Orange have been designing hotels around the world for almost 12 years. We enjoy the challenge of different cultures, new places and contrasting briefs. Our philosophy is always to create an original hotel that combines inspired design with intelligent logistics. We also believe that the process is a collaboration between all parties, and that the conversations along the way inform the final results.

From rural retreats in Ireland to the busy Asian hub of Mumbai, our hotels exude confidence, maturity and excitement. Often we look to local crafts, materials and moods as a starting point for our concepts. In many ways each project unfolds like a chapter in a book of stories.

We hope you find this collection of photographs and images of our work as inspiring and stimulating to look at as we found in designing them.

Christopher Ash  
James Soane  
2012

# Contents

UK	Chiswick Moran Hotel, London Hoxton Hotel, London, UK myhotel Chelsea, London Eynsham Hall, Oxford
Ireland	Radisson SAS Farnham Estate, County Cavan The Fitzwilliam, Belfast The Fitzwilliam, Dublin
Morocco	Kasbah Tamadot, Asni
India	The Park Hotel, Navi Mumbai i-bar at The Park Hotel, Bangalore
Russia	Plus Seven Hotel, St Petersburg
Switzerland	Chalet 7, Crans Montana
Concepts	W Hotel, London, UK The Poultry Hotel, London, UK Kiltiernan Hotel, Dublin, Ireland The Park Hotel, Pune, India King Street Hotel, Melbourne, Australia



Chiswick Manor Hotel



## Chiswick Moran Hotel

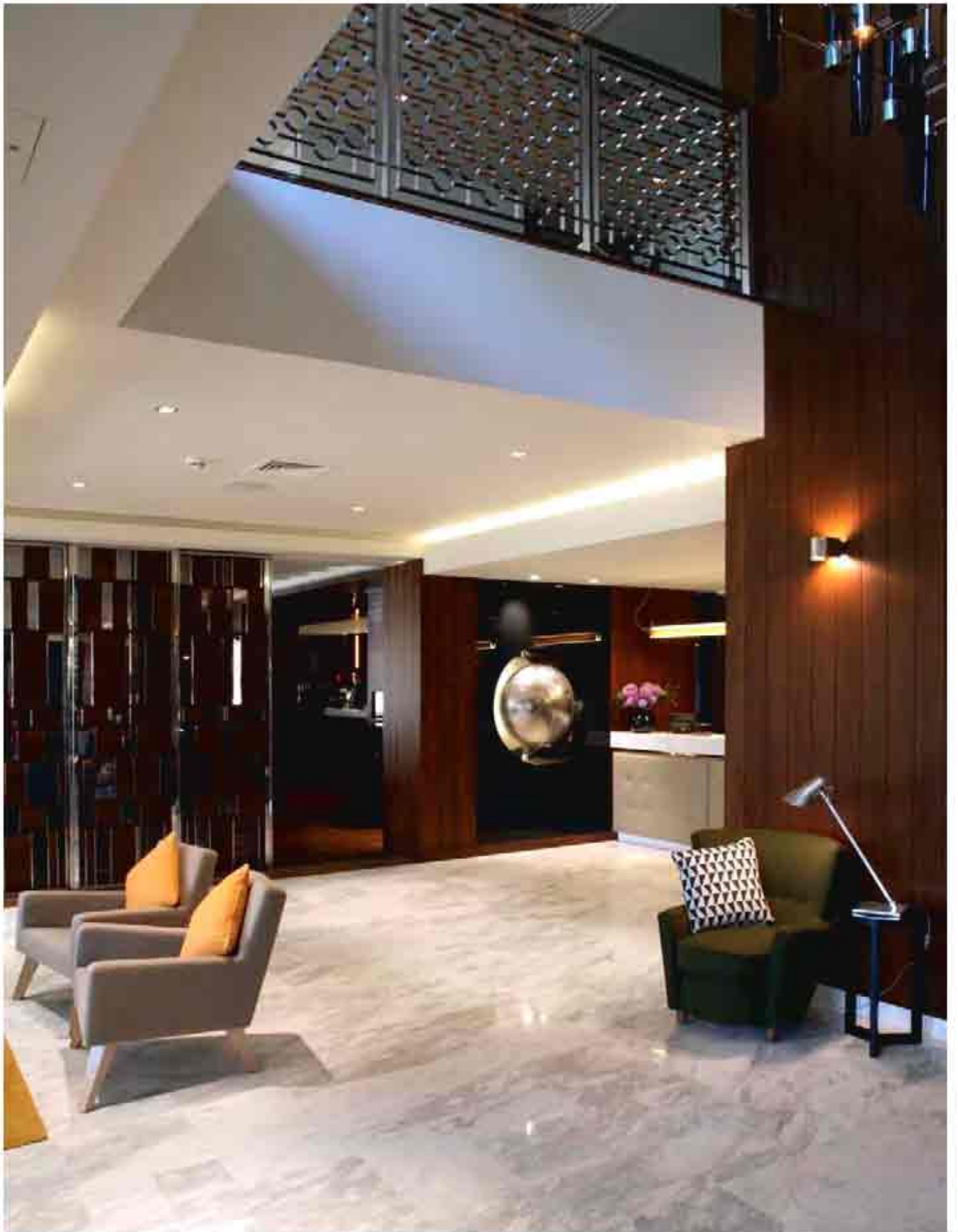
This 120 bedroom hotel is situated on Chiswick High Road in a vibrant quarter of southwest London. Housed in a 1960's former office building, the concept for the hotel is 'West Coast/West London'. The vibe is a contemporary evocation of 60's California, a response to the building's mid-century provenance and a link between this happening area of London and the glamour of LA.

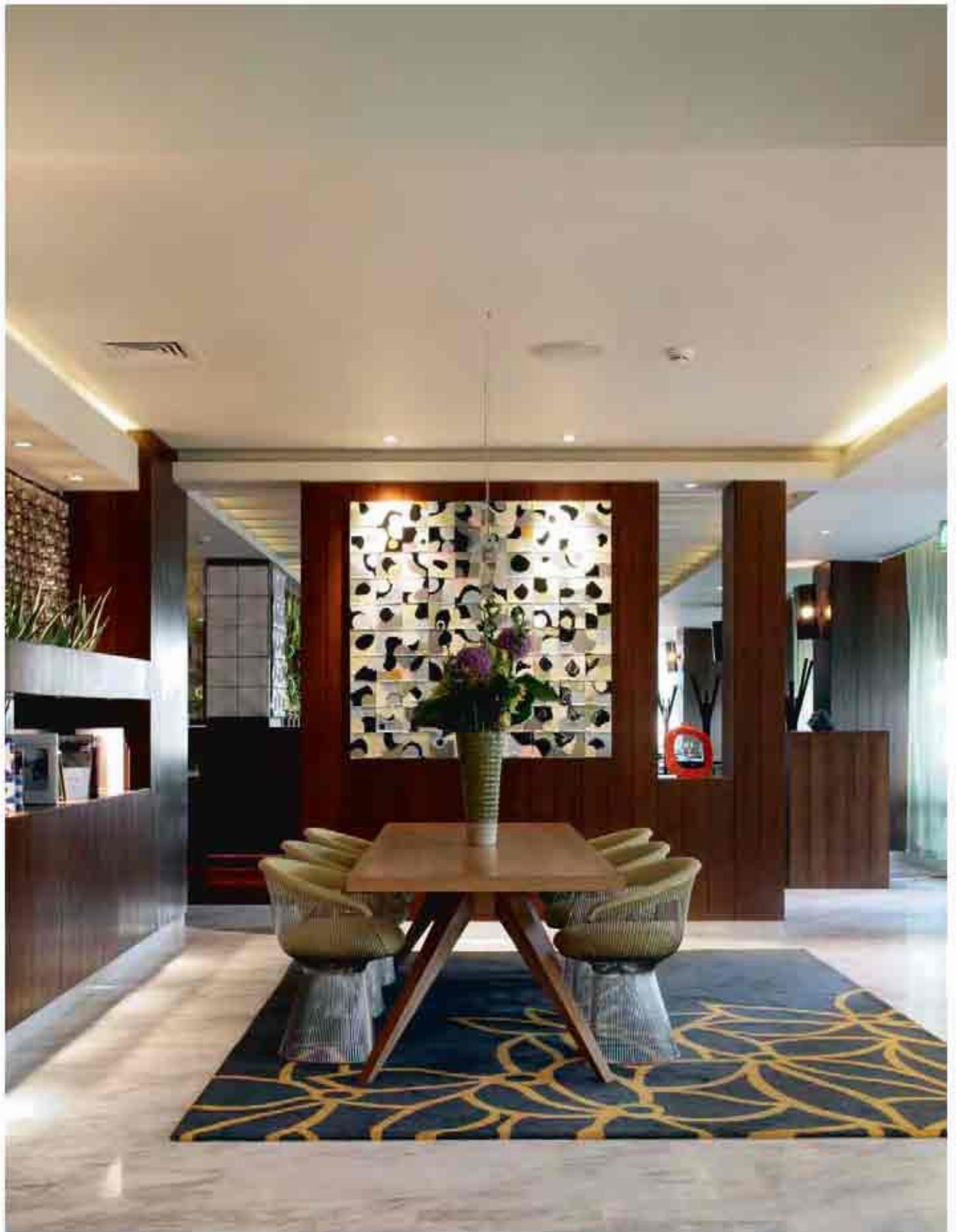
The hotel is announced by tropical palms and a sweeping porte-cochere, beneath a cantilevered concrete canopy. A palette of heavily veined marble and stained oak boarding unites a flowing sequence of lobby, bar and restaurant. Above the double height lobby is a vast bespoke polished steel and plexi-glass chandelier.

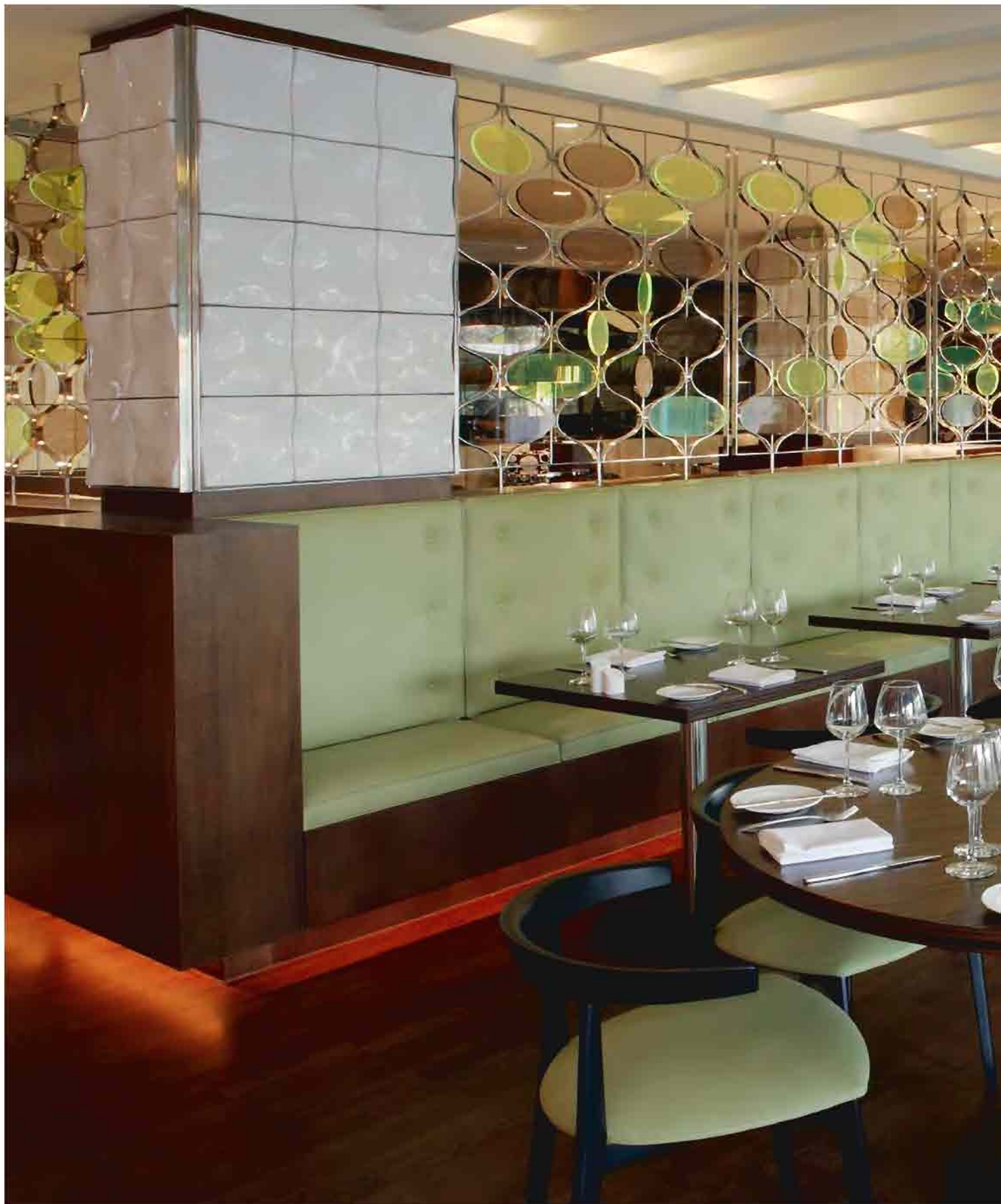
The Globe Bar takes its name from the huge shimmering globe that pivots between reception and bar defined by its fifteen metre counter in marble and burnt orange leather couches.

The restaurant goes by the name 'Napa,' synonymous with great quality and laid-back style. An aesthetic of cool marble, ebony laminates and crisp green leathers anticipate the fresh seasonal menu. A striking feature is a series of screens of polished stainless steel and rotating green Perspex ellipses affording glimpses into the residents' bar, a tucked away corner of moody smoked mirrors and cow hide upholstery.

Bedrooms are coloured according to the themes of surf, turf and desert. All have a full wall of glazing dressed with colour-washed voiles and graphic black and white patterned curtains. Carpets are shag pile, upholstery a combination of zesty woven linen and retro cream vinyl. Bespoke furniture is a cool and rectilinear combination of faux ebony veneer and mirror. Bathrooms are characterized by profiled ceramic tiles to an original 1960s design in tangerine, lime and slate grey. The fittings are similarly unconventional; the basin and WC are triangular.

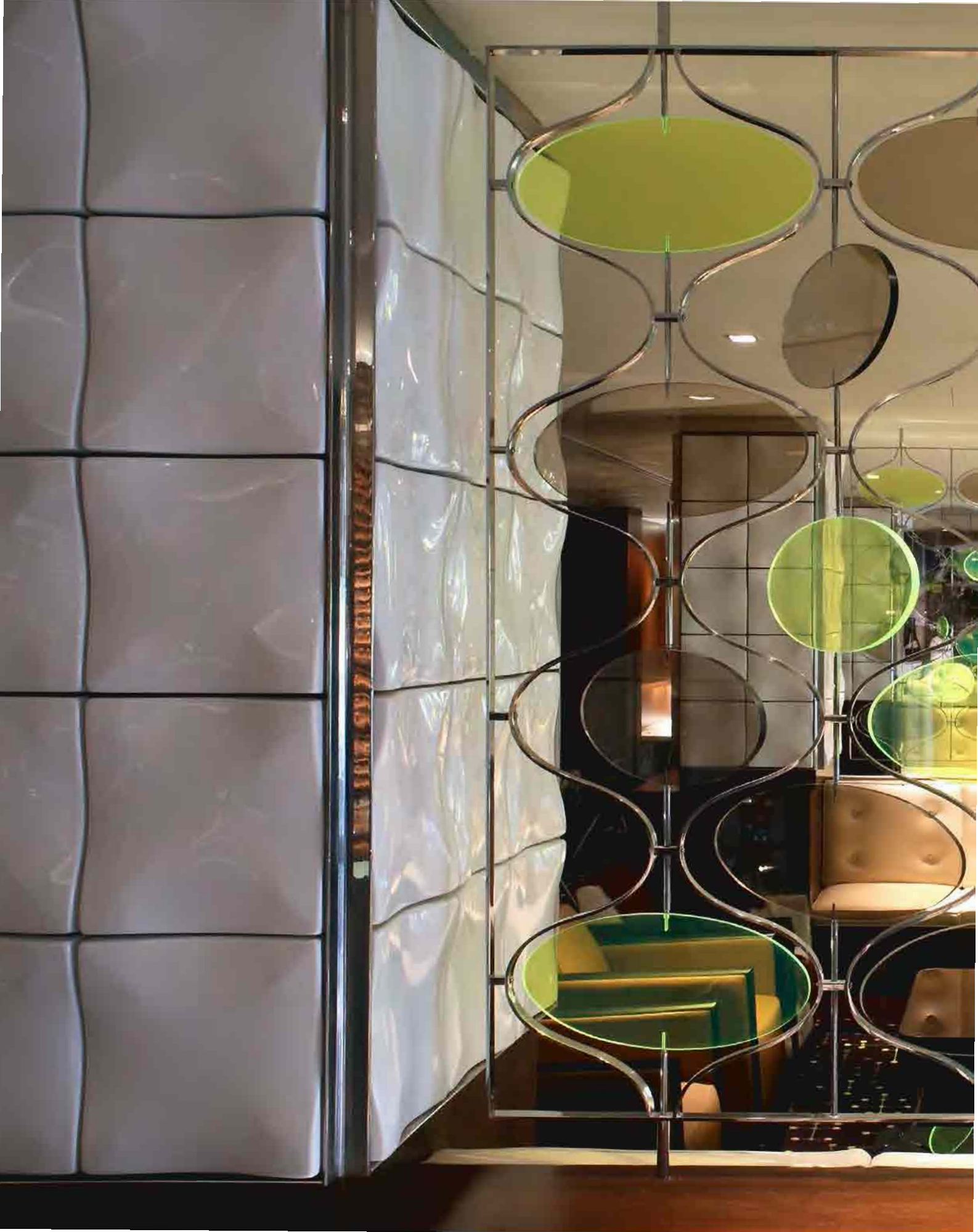






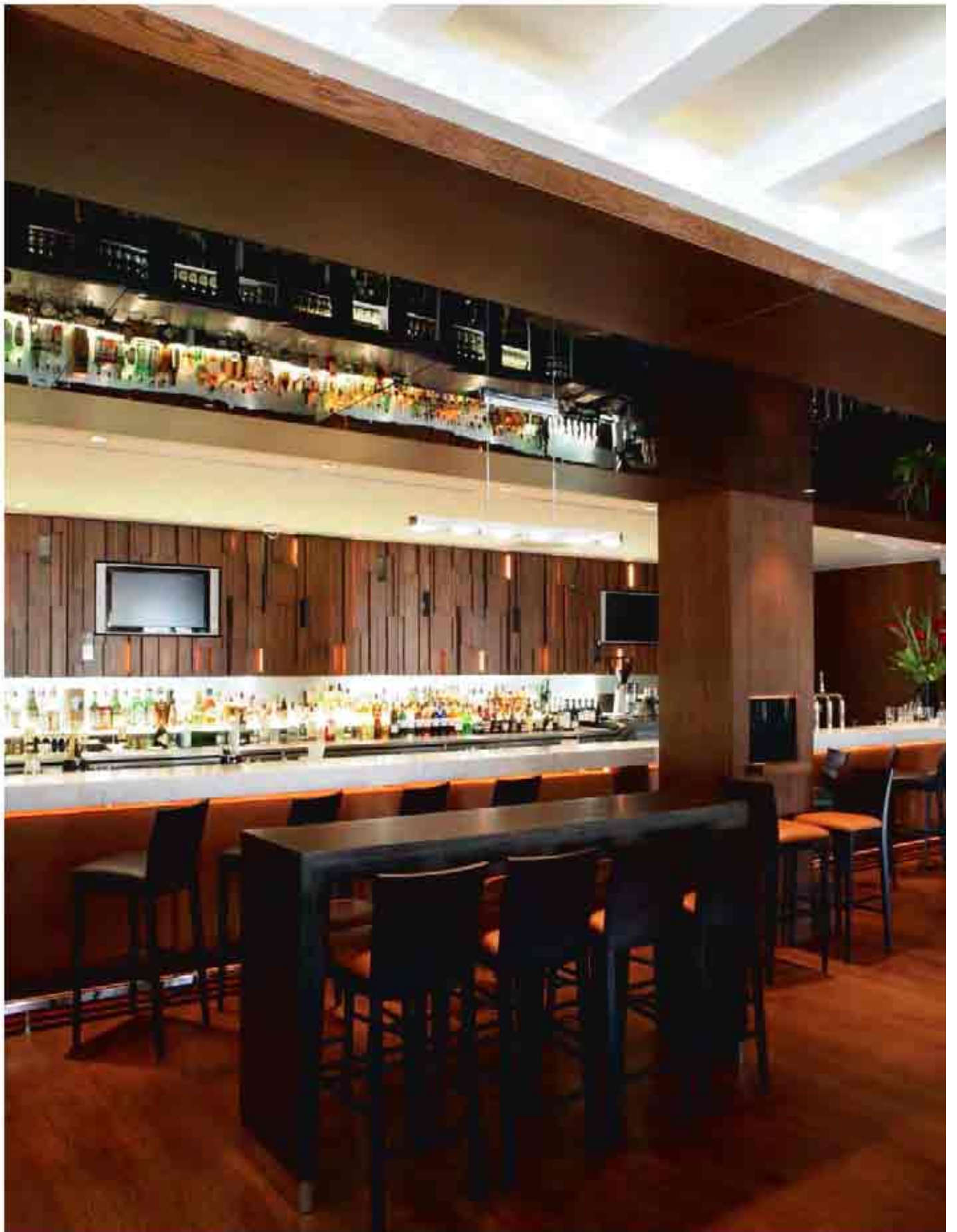






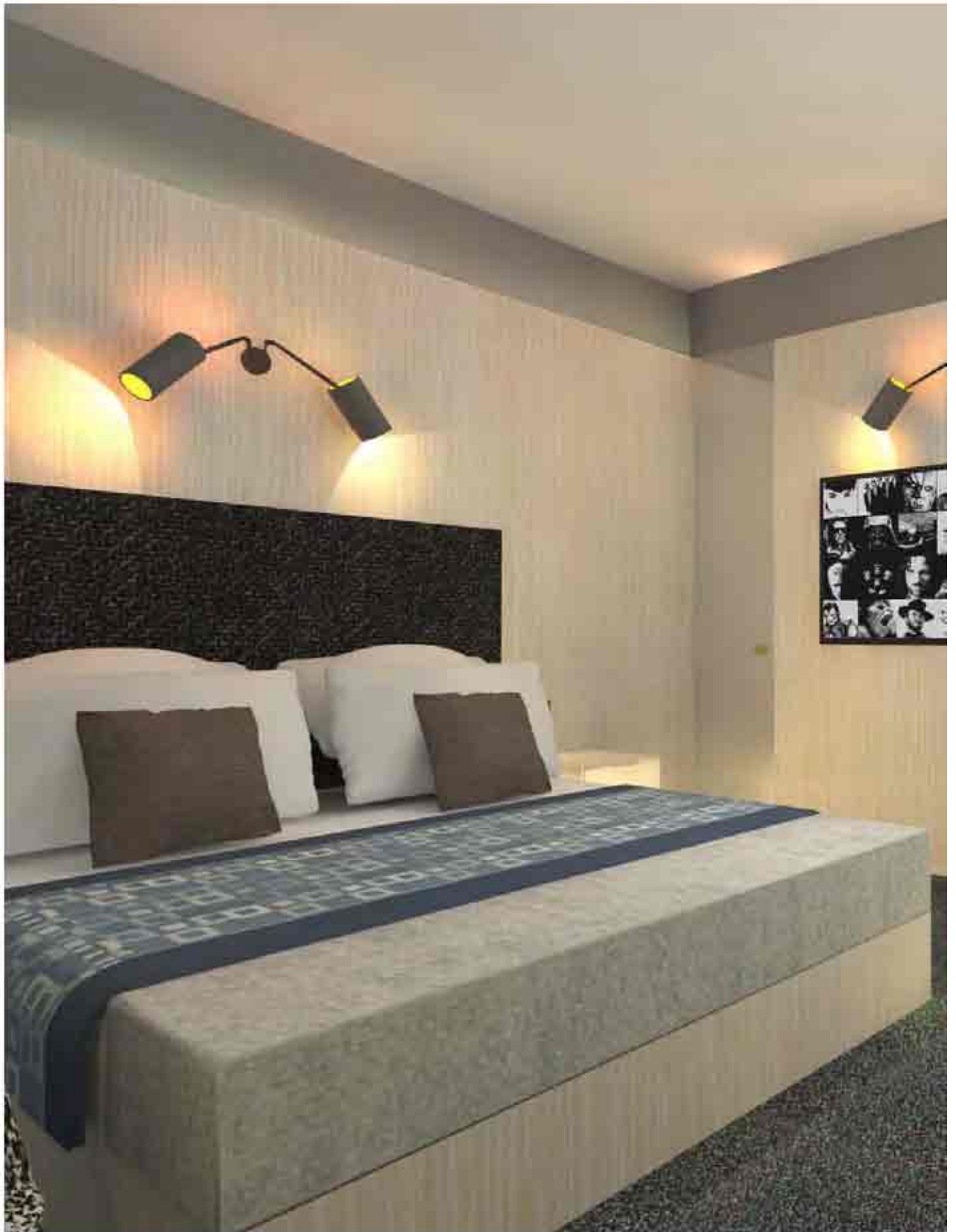












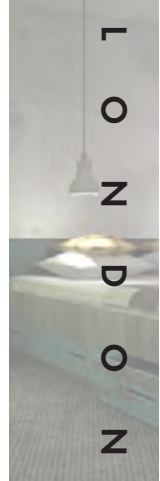






CHEEKY!  
NICE TO SEE YOU  
TO SEE YOU NICE  
JUST LIKE THAT!





# Hoxton Hotel

Project Orange were asked to come up with a new bedroom and bathroom concept for an existing London hotel that was looking to create a compact brand. In this 16 square metre room we have designed an edgy, distressed and bohemian room that reflects the neighbourhood. We thought of it as a deluxe sleeper compartment of a train.

A huge built-in bed creates a snug area allowing the rest of the room to feel open. A long desk is integrated into the window wall with a plywood art/shutter for blackout. The bathroom pod features a circular glass shower that allows natural light into the red tiled bathroom. On the desk sits an urban picnic hamper.



DON YOU ARE AWFUL BUT I LIKE YOU  
LOOK AT THE MUCK IN THERE \* ROCK ON TOMMY

**CHEEKY!**  
ARE STOP MESSIN' ABOUT

**NICE TO SEE YOU TO SEE YOU NICE**

SHUT THAT DOOR!  
HELLO & WELCOME  
PLAYSTATION  
INDY FILM!  
INDY FILM!

YIPPEE IS NOT  
WHAT A GAY DAY  
DING! DONG

SINCERELY  
YOU DIRTY OLD MAN!  
STUPID BOY  
I'M A BLACK  
HOW THERE IS A  
PINKY TOOTH

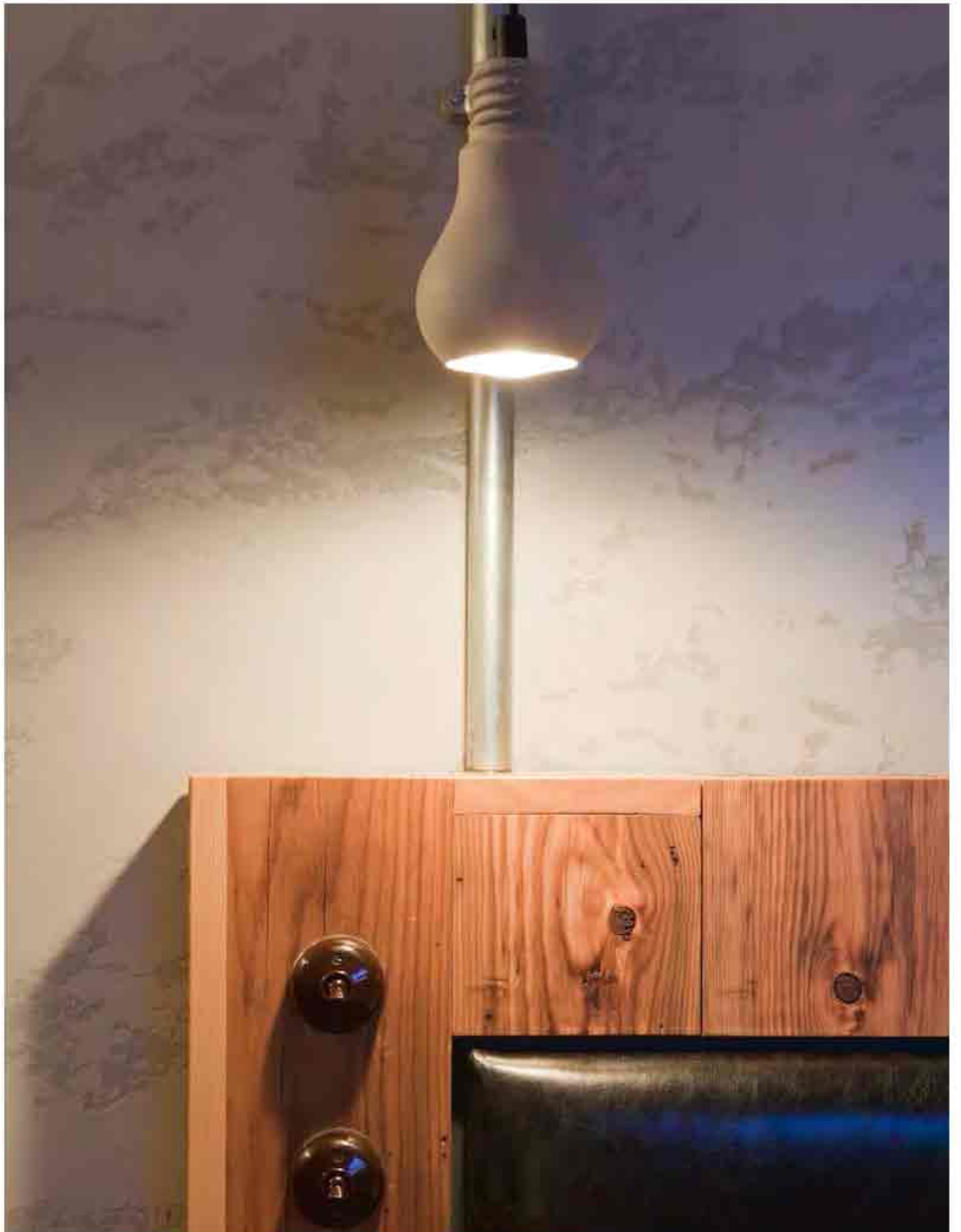
**JUST LIKE THAT!**

THE SCORES ON THE DOORS AND IT'S GOODNIGHT FROM HIM

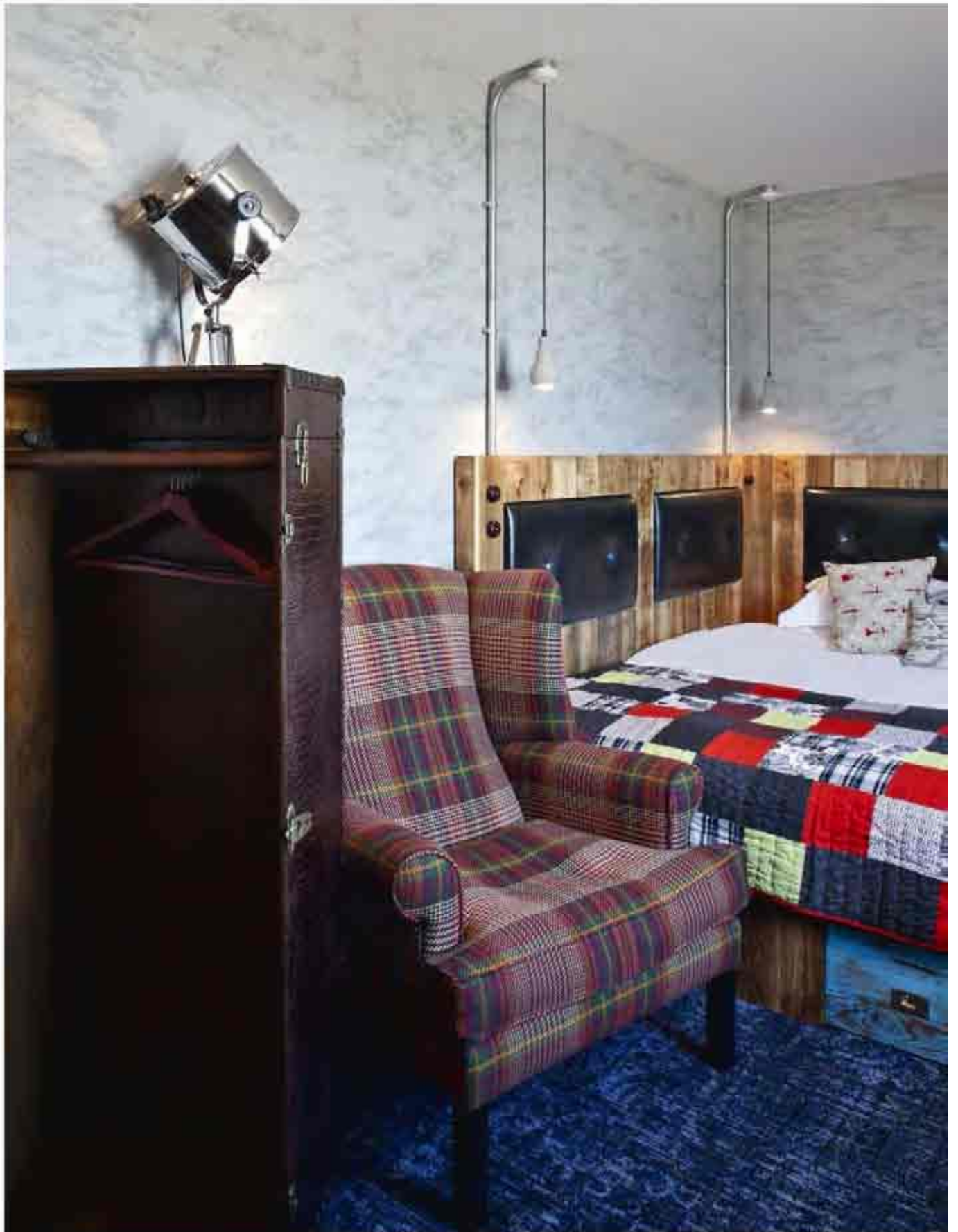
















## myhotel Chelsea

myhotel Chelsea is a 45 room urban retreat in the heart of Chelsea, situated behind Brompton Cross within easy access of the fashionable shops and restaurants. It feels more like being in a modern country house than in the middle of the metropolis. The colours and textures are deliberately mixed up to create a sense of authenticity and history. The scope of the project was to give the property a completely new identity without changing anything structurally.

On the ground floor the pink lobby leads to the bar and reception. The bar is clad in gloss white painted timber strip boarding while the counter is topped with polished pewter metal. Two doors open up onto the external deck and on one side is a new simple chrome fire surround with a mirror above. The conservatory opens off the pink ivy wallpaper-lined lobby with a view through the fish tank back into the reception. Along two sides are large clap-boarded walls finished in pale green, punctured by chrome portholes through to the gym and treatment room.

Upstairs the bedrooms have a convincing familiarity, as though they are in a house one remembers staying in. The floor is carpeted in a subtly patterned grey and purple texture, while the walls are chalky white and pale pink. At the windows there are full length toile curtains in cherry red. The bed has a woven bed head by Lloyd Loom and covered in an array of cushions and a soft satin throw. The desk is a simple dark oak piece while opposite the bed sits a long horizontal Elm cabinet housing the fridge, stereo and TV. Two bedrooms behind the bar have a distinctly different character, decorated in a palette of hot reds, clashing pinks and burned claret. They are best enjoyed at night with their luxurious 'polar bear' throws, erotic photography and moody lighting.









# Eynsham Hall

Situated on the outskirts of Oxford in extensive grounds, Eynsham Hall is a magnificent countryside mansion. Completely remodelled in 1908 by Lady Mason, Eynsham Hall is a wonderful example of the Jacobean Style very much in vogue at the turn of the twentieth century.

Initially Project Orange were invited to redesign the hotel bar in order to test design strategies and methods for modifying a historic building such as Eynsham. Originally the gunroom for the Mason family's collection of firearms, the new bar, now known as The Gunroom, fuses old with new, with a touch of art deco glamour. The original oak panelling has been carefully restored and, against the warm oak finish, you can now find traditional Chesterfield sofas and classic tub chairs upholstered in canary yellow leather and pop art inspired fabrics. The bar counter is an island of decadent black glass and polished chrome, sitting in the gigantic leaded bay window overlooking the grounds. The impressively high

ceilings have even helped to find a home for some of the estate's vast collection of antlers.

Following the completion of The Gunroom, we turned our attention to the guest bedrooms; all greatly in need of refurbishment. With no two bedrooms alike on the first floor of the hall and with a series of very tight bedroom layouts to the second floor, we were presented with a very difficult design challenge. The first floor deluxe bedroom with a dramatic bay window and a rather fabulous original marble fireplace has been brought back to life with a mixture of old-fashioned luxury and quirky modern highlights; a traditional "Knoll" two-seater sofa is upholstered in a vibrant, flock fabric and simple white, panelled wardrobe doors with a naughty lime green lining. Previously a tired meeting room, a luxurious, black marble bathroom has been installed to the rear of the bed, creating an elegant backdrop.



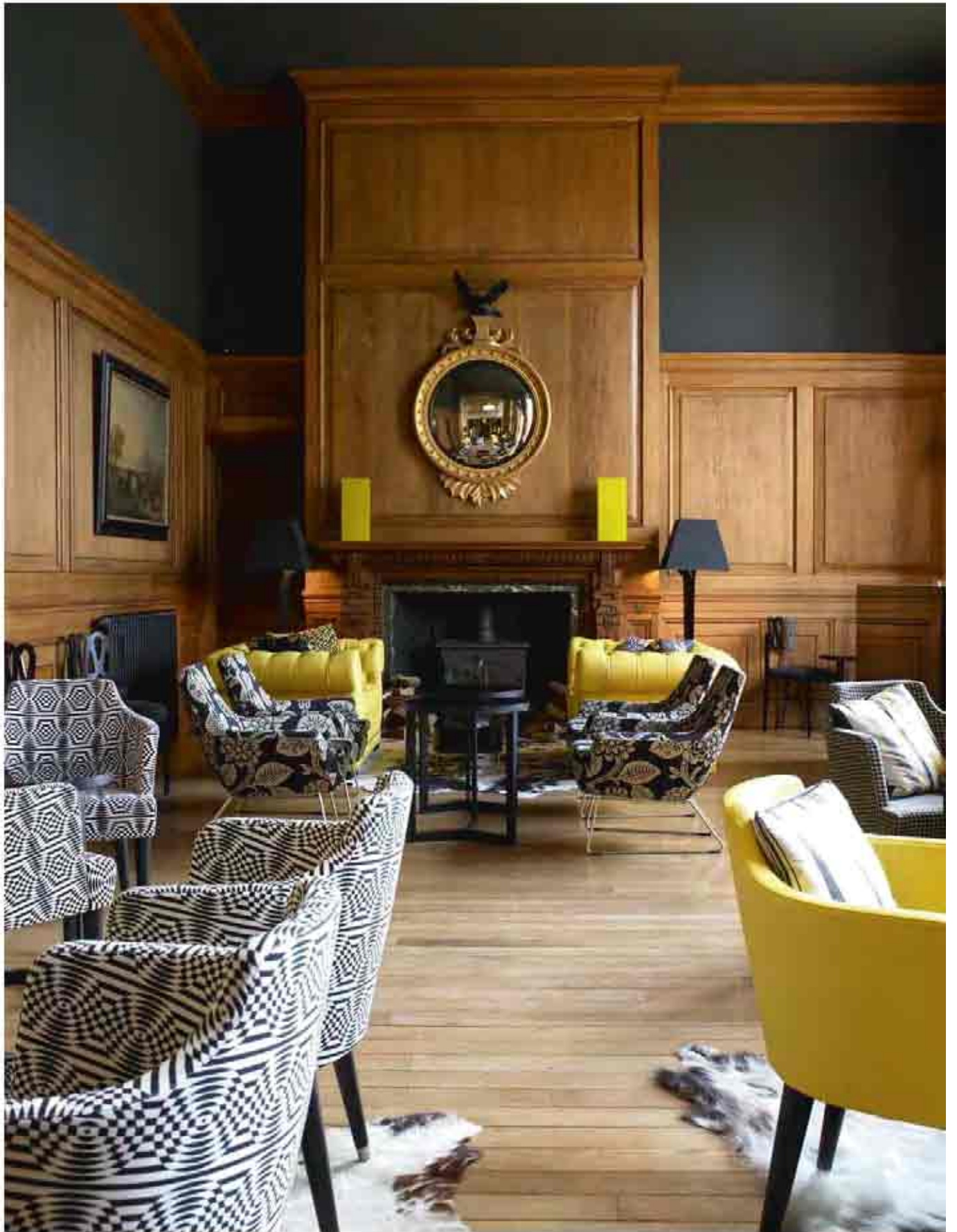














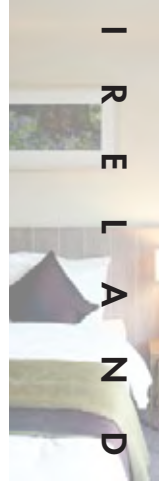












## Radisson SAS Farnham Estate

Project Orange was approached in 2005 to create a luxury spa destination with global appeal. The unique setting of Farnham House, Ireland in over 1300 acres of grounds provides a genuine sense of escape.

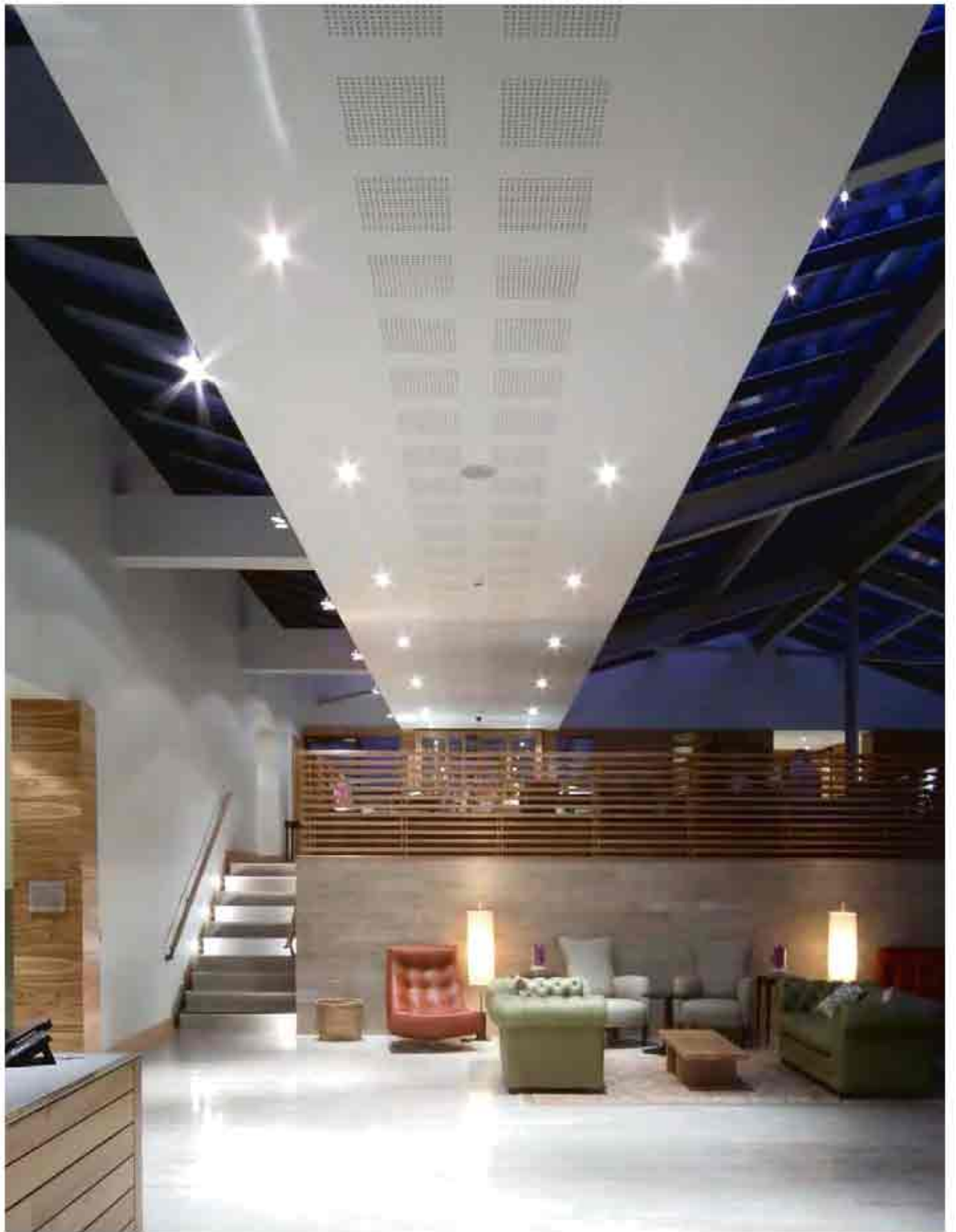
The existing Georgian Farnham House is the historic linchpin that is at the heart of the hotel and acts as the counterpoint to the contemporary new buildings designed by Gilroy McMahon Architects. Our interior design provides a variety of moods and experiences that connect outside and inside. Inspiration was taken from the colours and textures of the surrounding landscape; from the grey/blue stone garden walls to the lichen covered tree trunks. This connection to the locality provided a calm and naturalistic palette of materials and colours, which are soft and holistic.

The dramatic glazed lobby links the old house and the new bedroom blocks. At the far end is a raised bar deck leading into the restaurant.

From the reception, a series of enfilade rooms that are part of the original house have been renovated and individually decorated. The restaurant has a cosmopolitan ambience with the emphasis on food – we called it a ‘deli-barn’ referring to the barrel-vaulted ceiling. An external link takes guests to the huge banqueting hall and business centre with its glowing marble bar.

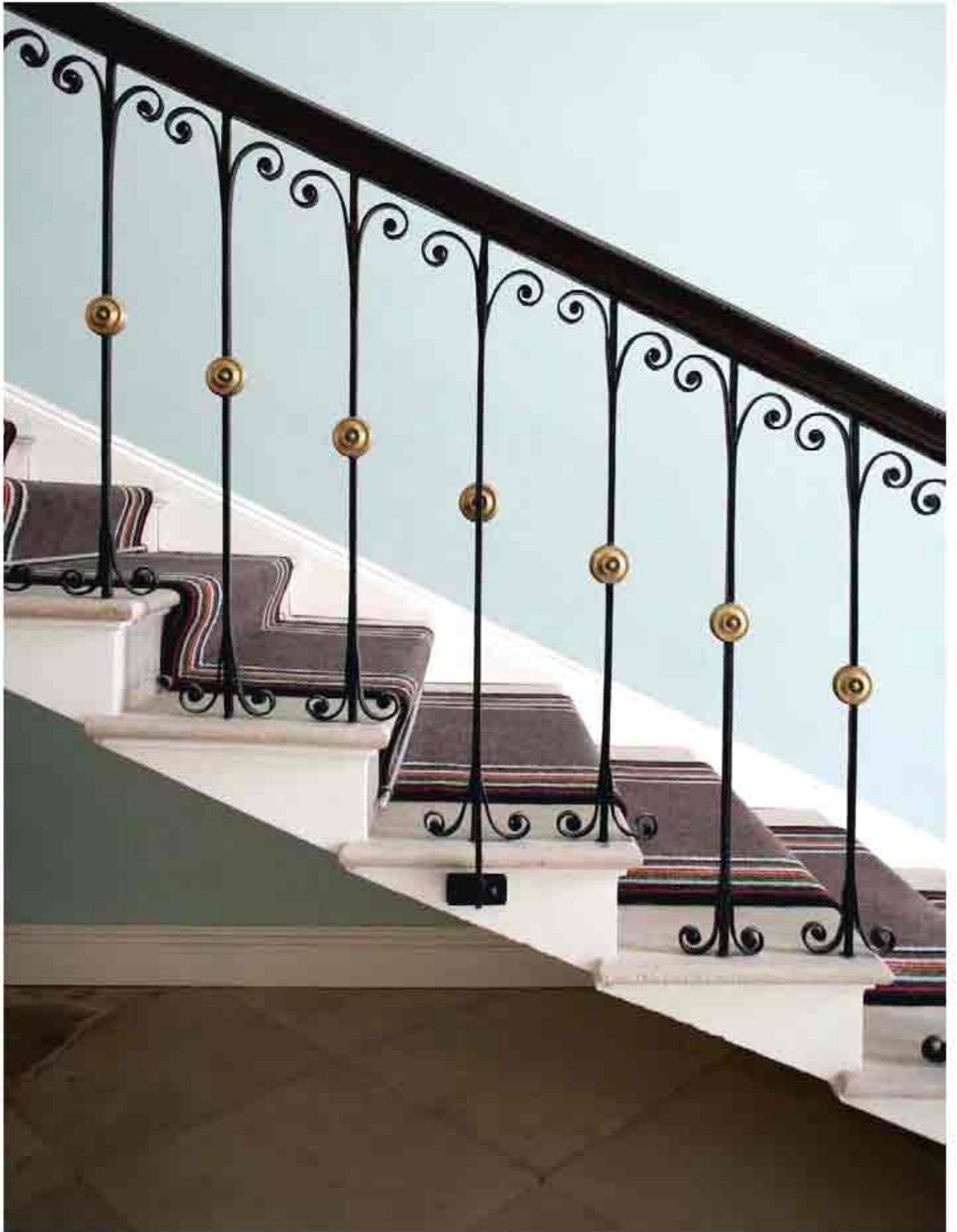
The bedroom design is characterised by the bull-nosed curved timber wall concealing the wardrobe and a sliding door, which can be opened to connect the bathroom and the bedroom. The bed is located within a hinged timber back-board. At the end of the bed is an antique chaise longue on tiny brass castors and upholstered in an Eames fabric, allowing the guest to relax and watch the flat screen TV or simply to read. In addition to the 148 standard rooms, there are 10 suites.







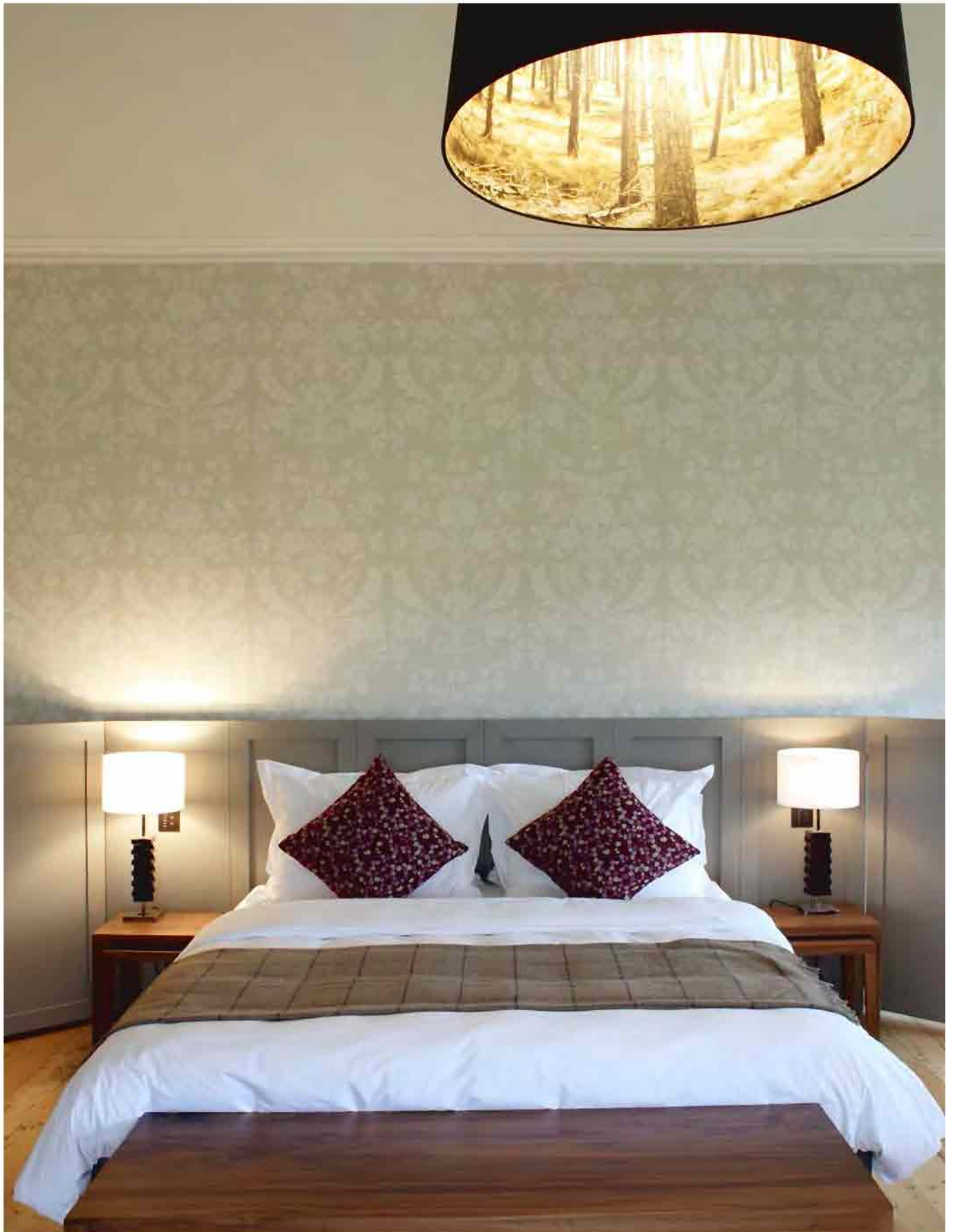


















## The Fitzwilliam Belfast

The Fitzwilliam Hotel Belfast is located adjacent the Opera House and is the sister to the original Fitzwilliam Hotel in Dublin. With 131 bedrooms, a glamorous bar, 150 cover restaurant, private dining and dedicated conference facility, the new build hotel offers Belfast five star luxury in the heart of the city.

The design plays on and develops themes that marry references to the traditional baronial mansion with modernistic/deco styling.

The main lobby and reception renders this theme in a sophisticated palette of oak, lacquer and marble, accented with furnishings in black, white and gold. The bar is deliberately moody and quite dark, tucked away behind the lobby and lined with intimate booths. The restaurant plays with ideas of the panelled room and with openness and enclosure. The three distinct rooms are lined with intimate dining booths and divided by rotating oak mobiles.

The bold, graphic theme extends to the bedrooms, which use off black wall panelling juxtaposed with accent colour schemes; amber yellow and emerald green. Again, the carpet is bespoke by Project Orange abstracting a bold 'F' motif into a deco inspired pattern reminiscent of a Greek key design. The bathrooms reduce to a monochrome palette, with daring black and white mosaic tiling set against a giant expanse of mirror. Nearly every bedroom offers a view direct from bed to the Belfast hills beyond the city.

Superior rooms are located at the principle corner of the building on every floor and offer panoramic views out across the city. The bed and desk form an island in the centre of the room separated by a low panelled screen. This lies on axis with a feature bathroom, opened to the bedroom by simply folding back the panelled shutters.

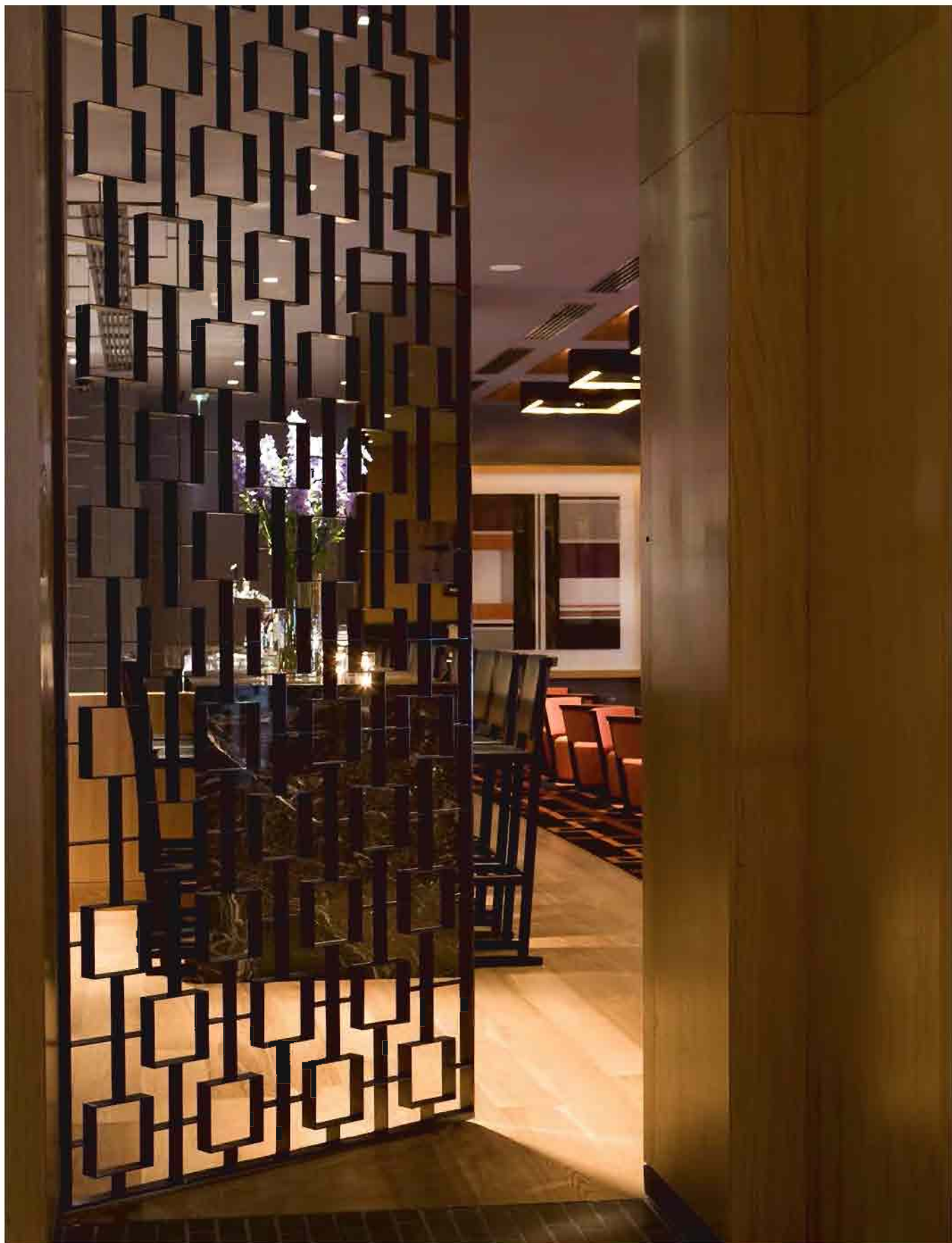






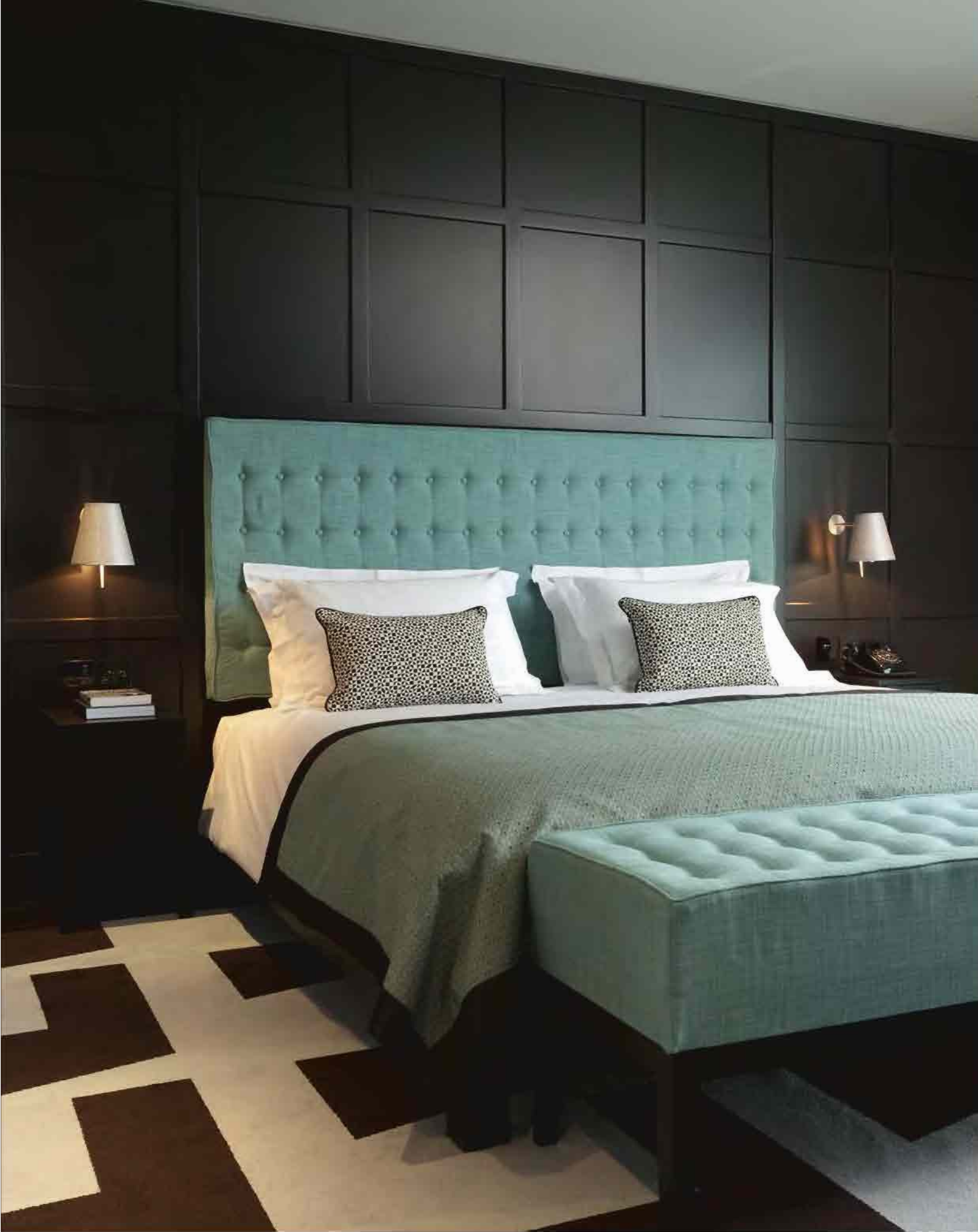


















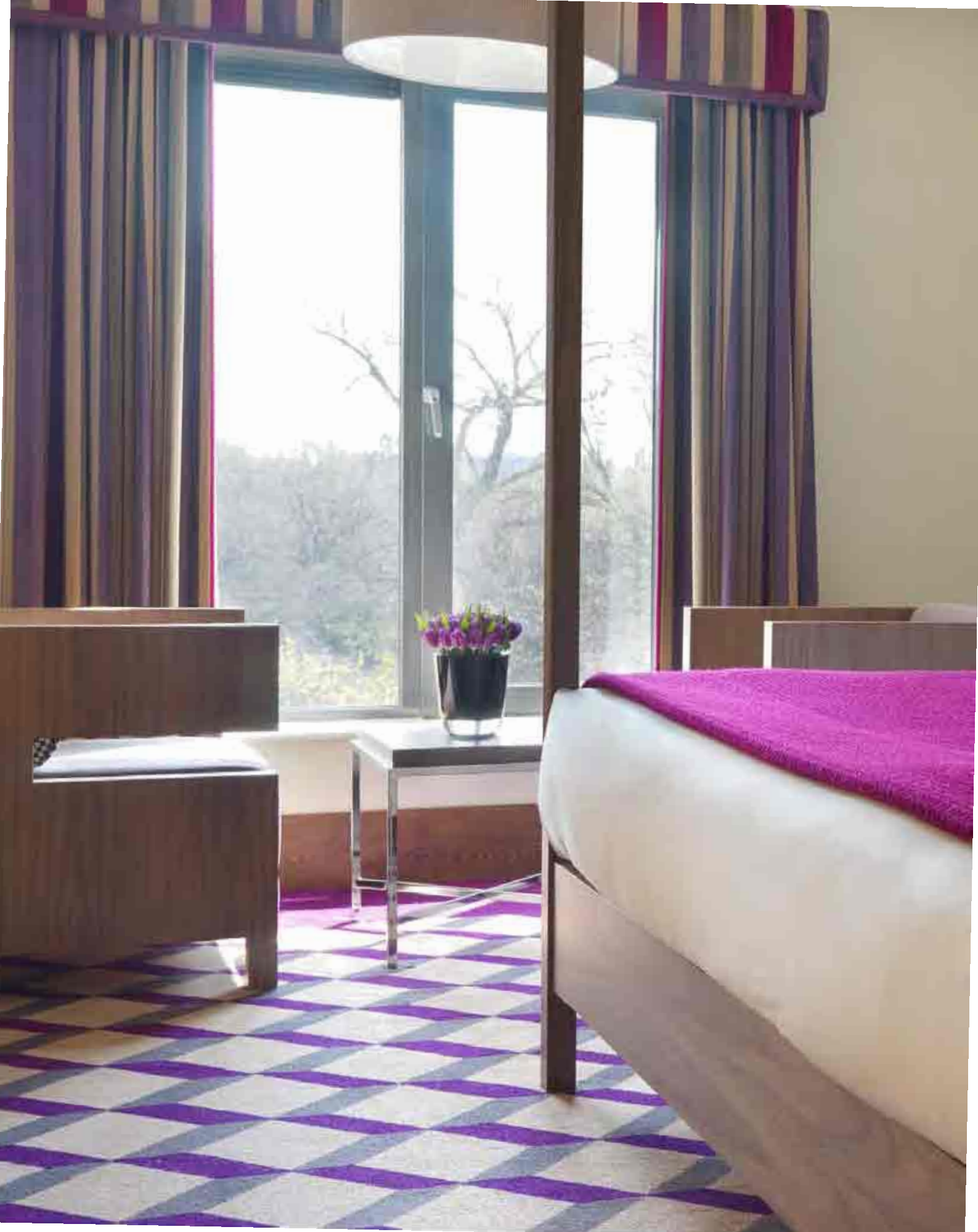




# The Fitzwilliam Hotel Dublin

The bedroom refurbishment of The Fitzwilliam expands further the 'Baronial Moderne' concept of the original hotel, implemented ten years previously.

The use of bold colours in a series of graphic, almost heraldic patterns plays on and develops the signature aubergine colour scheme. New quirky furniture elements, designed by Project Orange, together with retro touches such as Bakelite telephones and embroidered satin headboards complete the new interiors. Both playful and sophisticated it is a vibrant development of the hotel's identity.











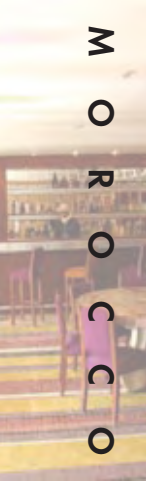












# Kasbah Tamadot Hotel

Kasbah Tamadot is a magical walled house set on the side of the rolling hills of the High Atlas Mountains. It overlooks the valley down to a river below and in the distance there are the snow-capped mountains. The refurbishment of the building has been extensive, though the character and charm of the original complex of spaces has been retained and enhanced. Our design concept has been to marry traditional Moroccan colours, textures and patterns with a more contemporary treatment to the interior architecture. The contrast between old and new, bright colours and muted, craft and technology provide a counterpoint that singles out the Kasbah as being unique.

The Kasbah is a complicated plan of staircases, courtyards, rooms and gardens. On the entrance level are three bedrooms, two internal courtyards, the spa and access to the outside pool and the studio. Our design for the infinity

edge swimming pool creates a stunning vista within the garden and allows guests to enjoy extraordinary views. A main stair leads up to a painted courtyard around a deep blue reflecting pool. Opening from here are a series of bedrooms, the salon and the restaurant with its stripy floor and enfilade balcony.

Each bedroom in the Kasbah is individual and has been designed according to its aspect and special antique features. The original design featured many artefacts that had been collected by the previous owner from all over Africa, the Far East and India. As a result there is a very eclectic series of elements including wooden ceilings, ancient chests, heavily carved cupboards and an assortment of every day bric-a-brac.







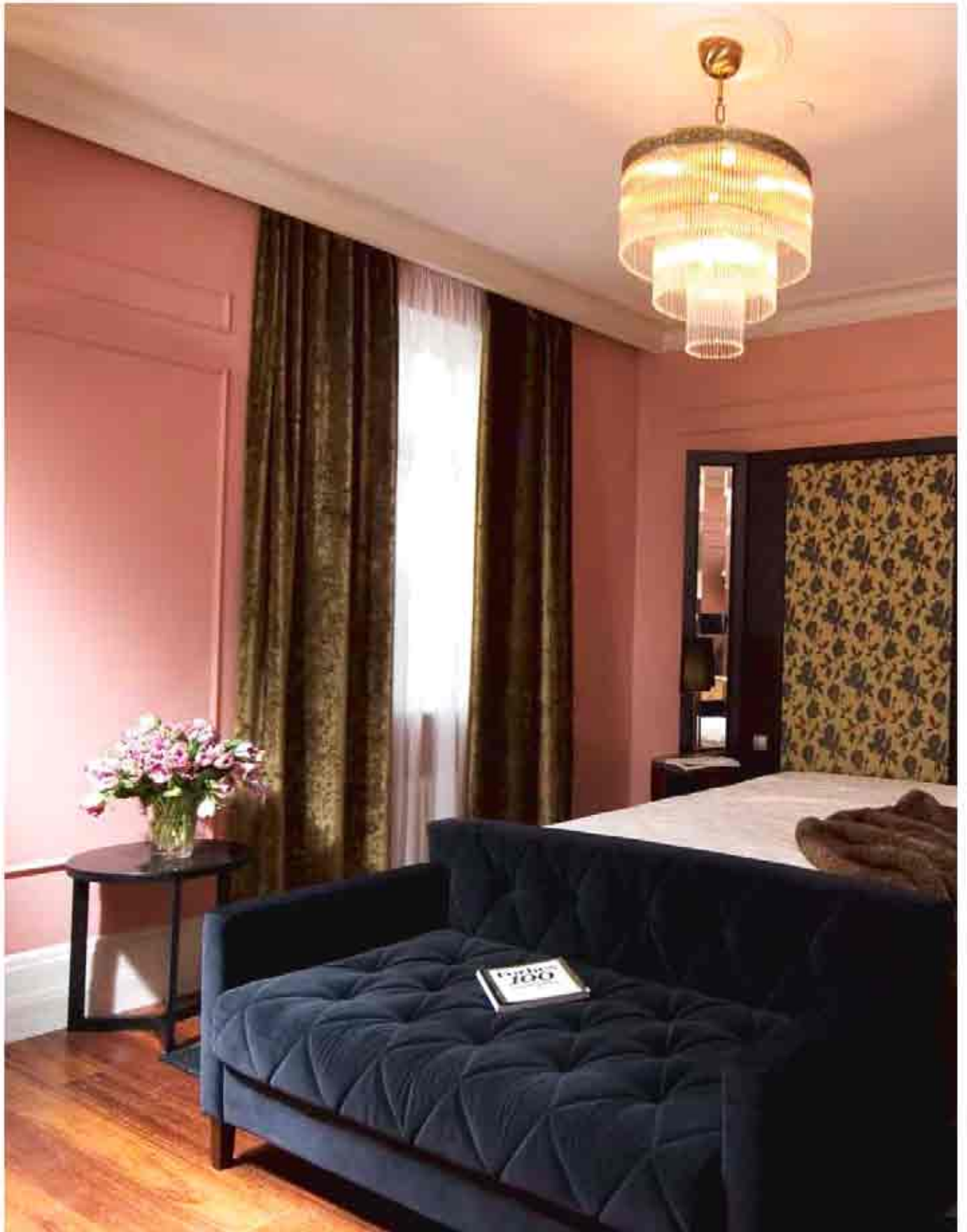




## Plus Seven Hotel

Project Orange were invited to work on the first independent design hotel in St Petersburg in 2005. The design aims to fuse the classical history of the city with cutting-edge design. The bedrooms in the old building are opulent and elegant, while the public spaces are cooler and more pared down. The lobby is up a half flight of black marble stairs that leads through to the courtyard restaurant and lounge. The restaurant is situated in the heart of the building but top lit by a large skylight. A parquet floor and large backlit historical painting recalls the city's 'Silver Age' juxtaposed with the glossy red lacquered chairs and tables. Adjacent to the restaurant, the 'Jet' bar is an extremely dark space with flashes of gold reflecting in the black gloss walls.

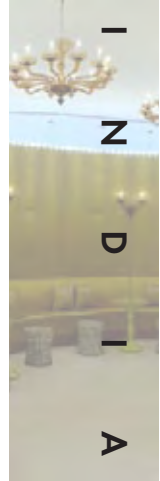
The route up to the bedrooms is along moody grey painted corridors. A black moulded door leads into the black and white 'Toile' wallpapered lobby containing the wardrobe and door to the bathroom. This room is tiled in black brick tiles with a gold painted ceiling, while a washstand sits beneath a decorative gold mirror. Within the bedroom the walls have been given a skirting, panelling and a cornice to re-create a classical space. A tall walnut padded bed-board fills one wall and the bed is finished off with a fur throw with a specially designed circular bedside table on either side. Overall the look of the room is eclectic; a collection of personal choices that have been gathered over time. It feels like staying in the room of a grand house rather than a hotel.







the  
PARK



# The Park Hotel Navi Mumbai

The ambition behind the latest Park Hotel was to create an iconic hotel for New Mumbai. The interiors mix traditional Indian patterns and textures with clean lines and modern shapes, bringing together East and West. The facilities include reception, bar, coffee shop and poolside area on the ground floor as well as the 'Bamboo' restaurant seating up to 60 people. On the upper floors there is a large banqueting hall adjacent to three interconnecting business suites. The bedrooms are arranged around an enclosed atrium, bringing natural light into the circulation areas. On the top floor are larger rooms with a larger facility for long stay guests; there is one master suite, a gym and small spa.

The building had been abandoned for 20 years, never having been completed. We installed a window system and painted the building white. By night the elevation is illuminated by amber and blue LED lights. The poolside terrace is characterised by a huge abstract glass mosaic pattern in blues, greys and

oranges creating a graphic backdrop for the dramatic black elliptical pool. To the rear of the building is our 'white' garden. Inside, a free-form series of pods on the ground floor have been inserted. The orange plastered bar breaks out to address the terrace, while the reception zone houses the snug and is clad in hand-finished plaster Jali.

The bedrooms are generously proportioned with high ceilings, decorated in a classic neutral palette lifted by flashes of bright colour. The bathrooms all have huge showers and a teak vanity counter the length of the room, which is clad in pristine white tiles. The wardrobe is a one-stop-shop for the guest containing hanging space, a safe, a fridge and a tea tray.

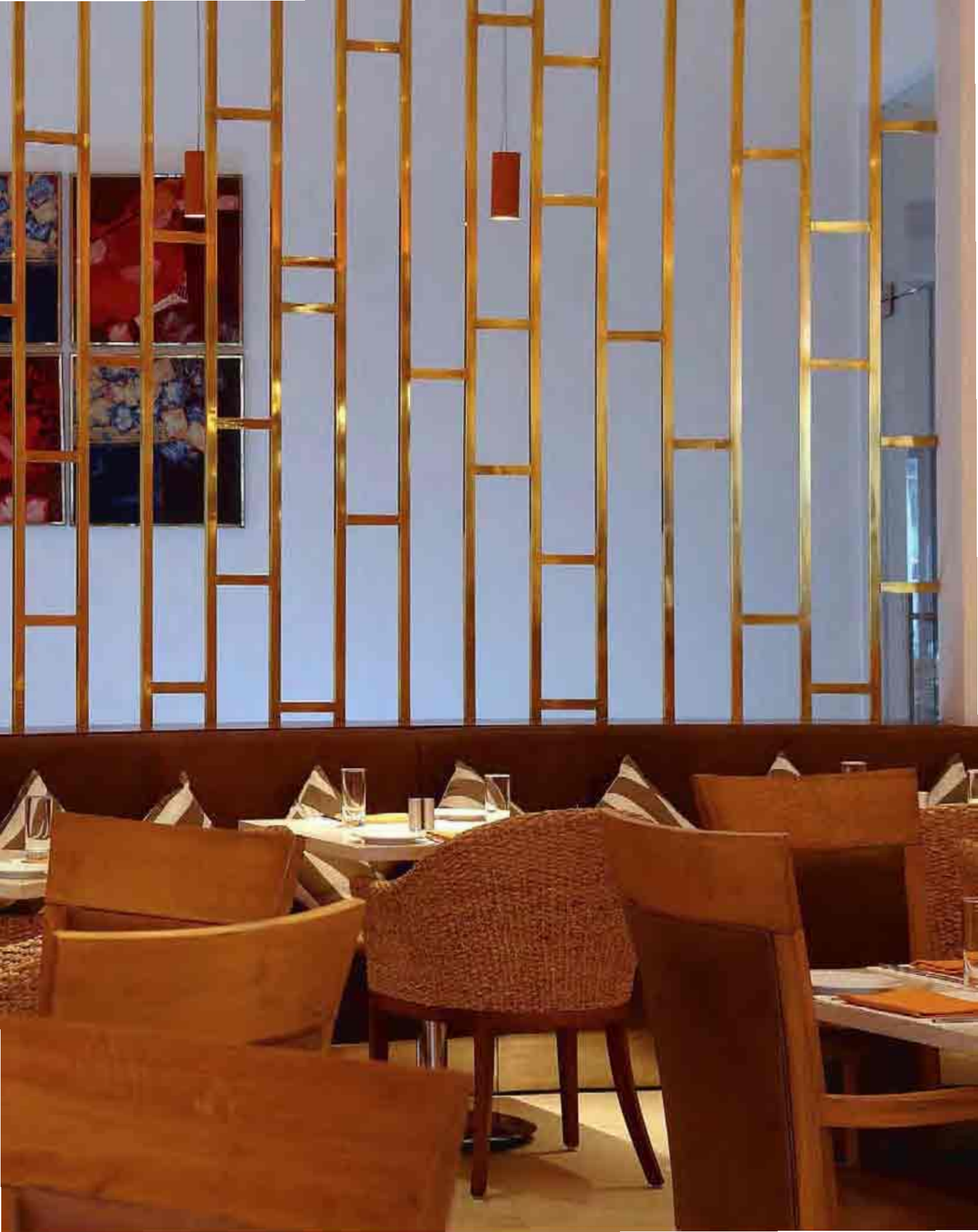
Project Orange designed all the furniture and most of the fabrics for this project.







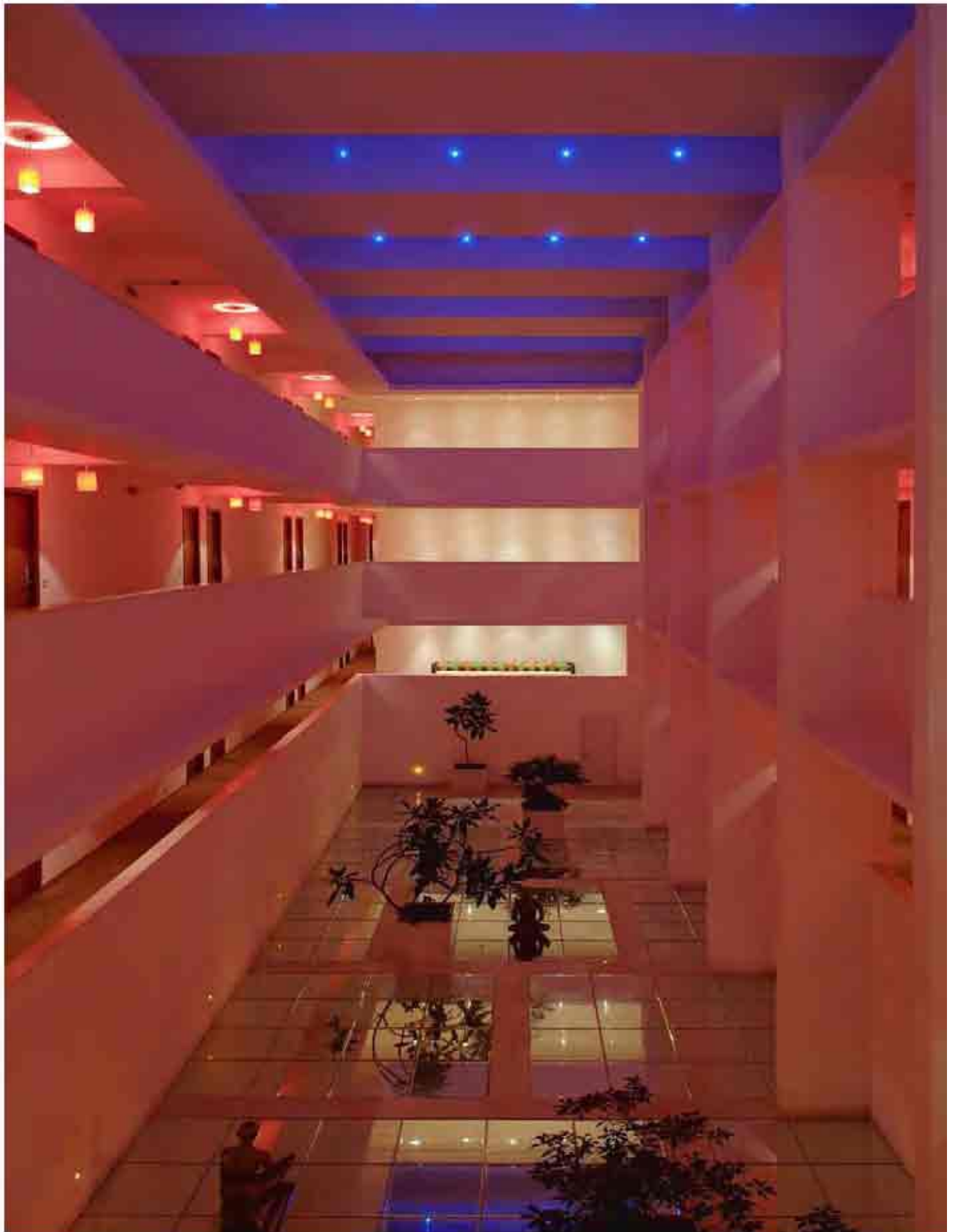






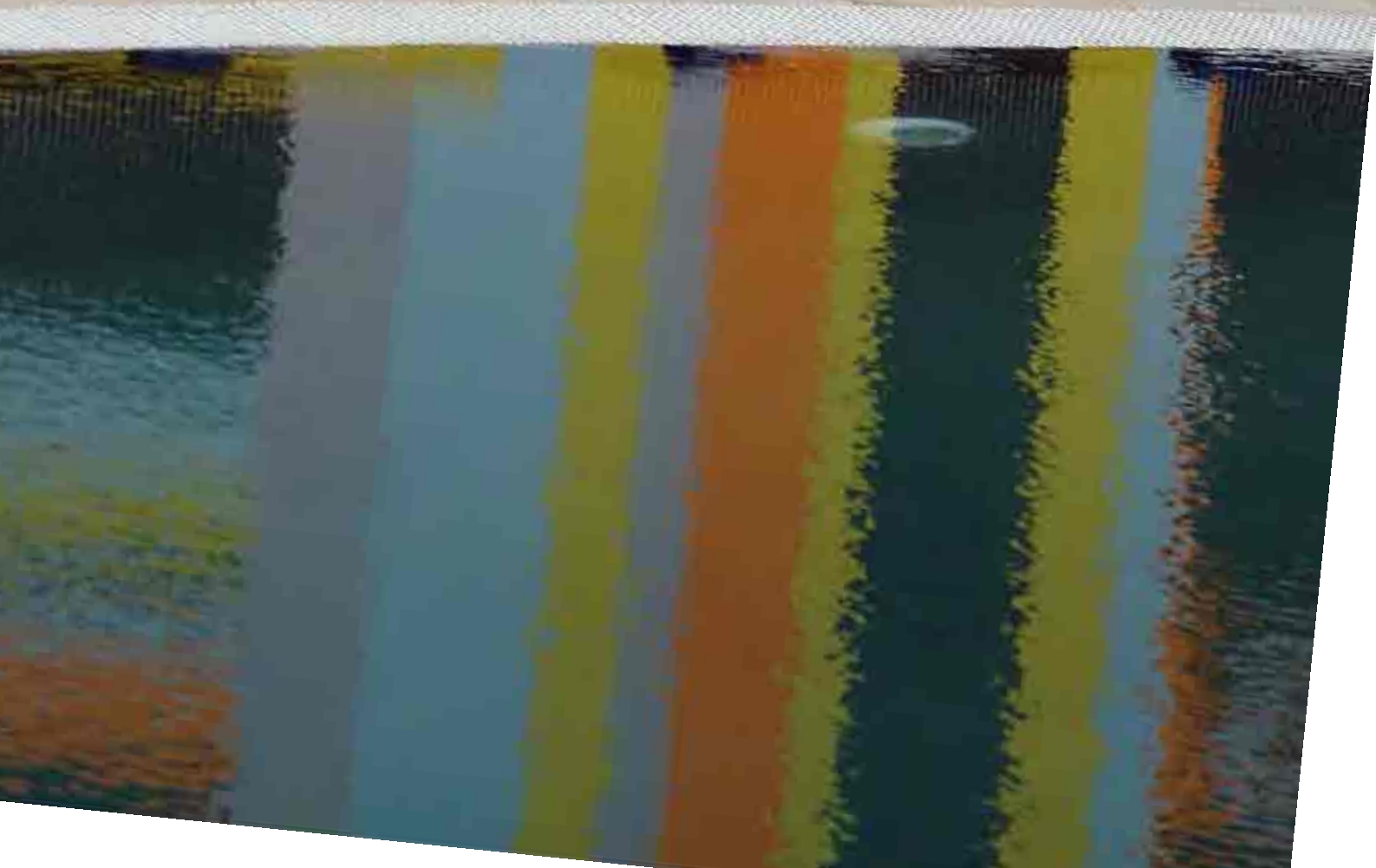
























## i-bar at The Park Hotel Bangalore

The new i-bar is luxurious, mysterious and decadent. It uses traditional pink sandstone and carved timber screens in an altogether new way fusing established materials with a graphic sense of pattern and colour to create an ambience that is rich and enveloping. In addition the concept of 'patchwork' is introduced both as a motif and as a metaphor for the city. Elements are collaged together from the different pink colours on the floor to the dusky pink mirror on the walls and the ceiling tiles to the entrance.

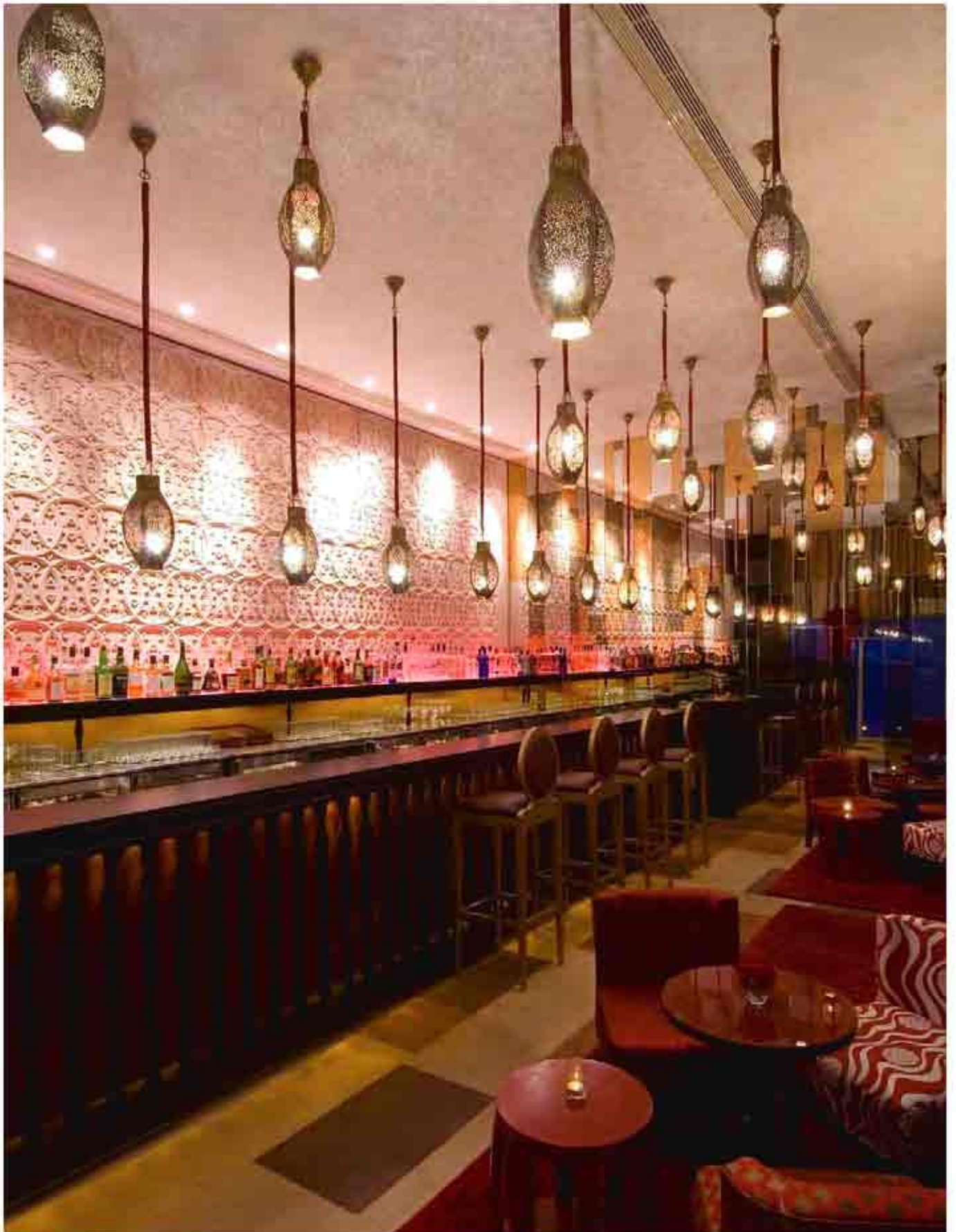
The layout is understood as a box within a box, where the inner sanctum is accessed via the sliding timber screens. This area has a lowered ceiling and features a collection of furniture all covered in red leather, silk and cotton. The floor is covered in a number of individually designed textured rugs by Project Orange.

The bar itself is on the end wall standing in front of a huge textured hand-carved sandstone relief. Its timber top is supported on a long row of turned timber spindles that are lit by individual LED lights. The counter rises in height on axis with the main entrance to act as a platform for the DJ who is in command of creating the right atmosphere all night long. The windows to the pool side are etched with a delicate motif providing only a sense of the world beyond.

The inspiration for the design came from a recent trip to northern India and a visit to the Qutb Minar. Here the sandstone structures have been standing since the C13th and have an extraordinary patina of age as repairs and additions have been made. This patchwork of colours, textures and shadows became a touchstone for the project, which seeks to reconcile old and new India.













# Monsoon Restaurant, Park Hotel Bangalore

Located in the Park Hotel Bangalore, one of India's first boutique hotels, the inspiration for Monsoon Restaurant is based in the setting of the surrounding area.

We always try to create a sense of place by making connections to the locale, and through our research we were captivated to discover that Karnataka is home to some 318 species of Butterflies. Some travel as much as 3000 miles in their short lives – so they represent another kind of traveller. We wanted to embed this motif into the walls of the space so designed a series of panels with intricate inlay work depicting groups of dancing Butterflies. While completing the projects looking out over the pool we were amazed to see a kaleidoscope of butterflies dancing over the water – maybe they had come to take a look?

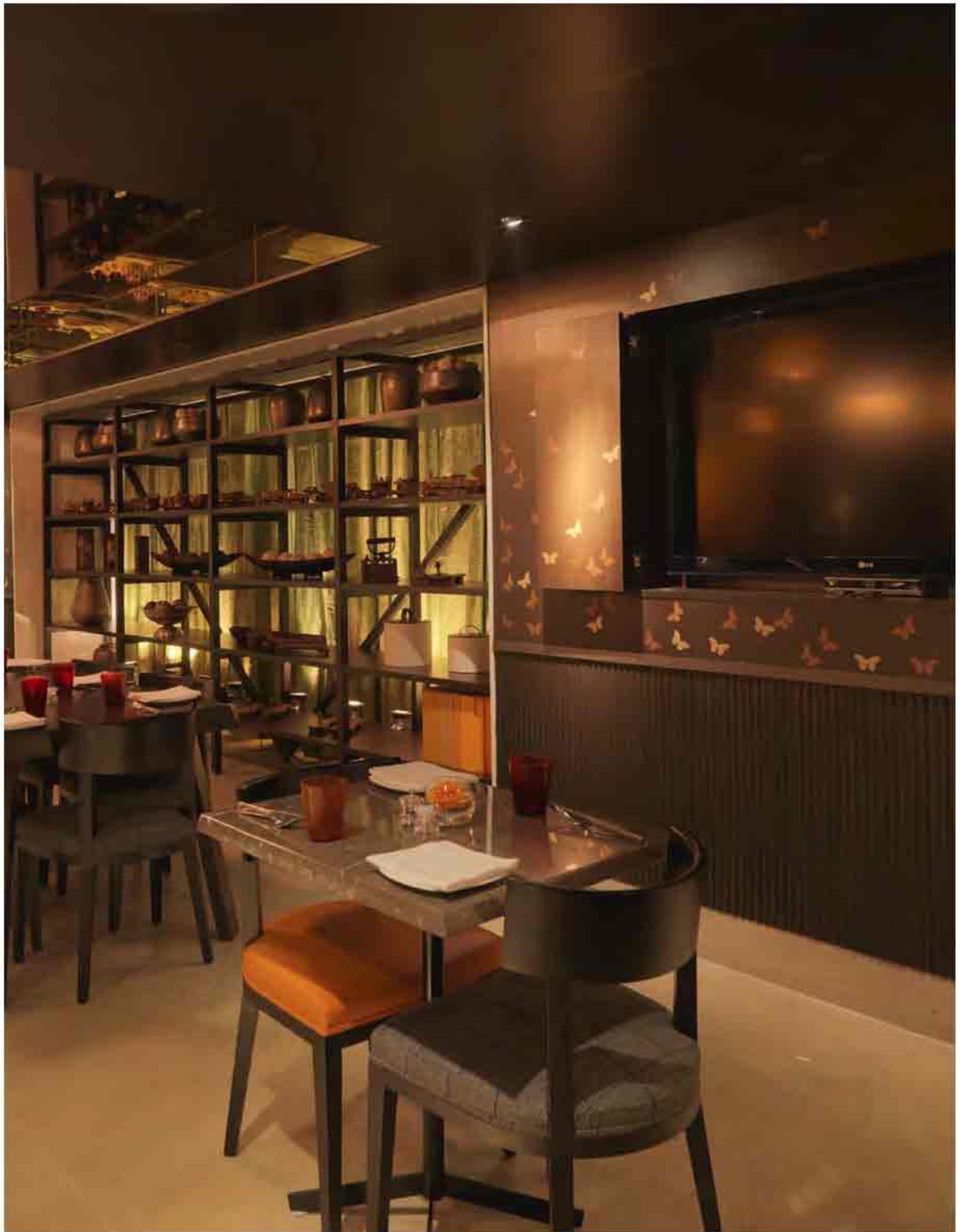
The dark timber walls are of Wenge and inlaid with oak, walnut and sandalwood. The layout has been designed to accommodate a buffet area and wine storage at the back of the restaurant with a pass to an open kitchen creating a certain buzz.

At the front of the room there is a long sofa, embroidered with butterflies, with tables for two that can be combined. A special collectors shelf has been created in the opening, allowing views to and from the lobby.















## Resort Hotel, Montenegro

Project Orange were successful in reaching the final stages of a pitch to design a large 5\* hotel resort located on a remote site, near Tivat in Montenegro. The scope of the project included the complete interior design of the guestrooms and public areas, as well as the private 5 bedroom villas located along the bay.

Taking inspiration from the stunning views and natural setting of the bay, both the guestrooms and villas have been designed in the spirit of rustic luxe, a tranquil haven characterised by the use of natural materials redolent of the local landscape.

The interior architecture of the private villa expresses a language of craftsmanship and construction, where timber and stone floors, ceiling beams and deep hardwood windows are married with exquisite linens, silks and leathers in perfect balance.

The guestrooms of the main hotel have been designed as a grand suite of residences set within a series of elegant and contemporary seaside lodge buildings. The use of a strong horizon line of vertical timber panelling within the room brings the outside in, referencing the scented pinewoods that surround the site, whilst the floor is a hand-made blue glazed tile to evoke the sea.















113





# Kensington Hotel, London

Project Orange were invited to take part in a pitch for the complete renovation and redesign of an existing hotel sited in an impressive Victorian building in Brompton, London. The brief was to develop a headline boutique hotel for a mix of well-travelled business-trippers and city-breakers looking for something stylish and unique.

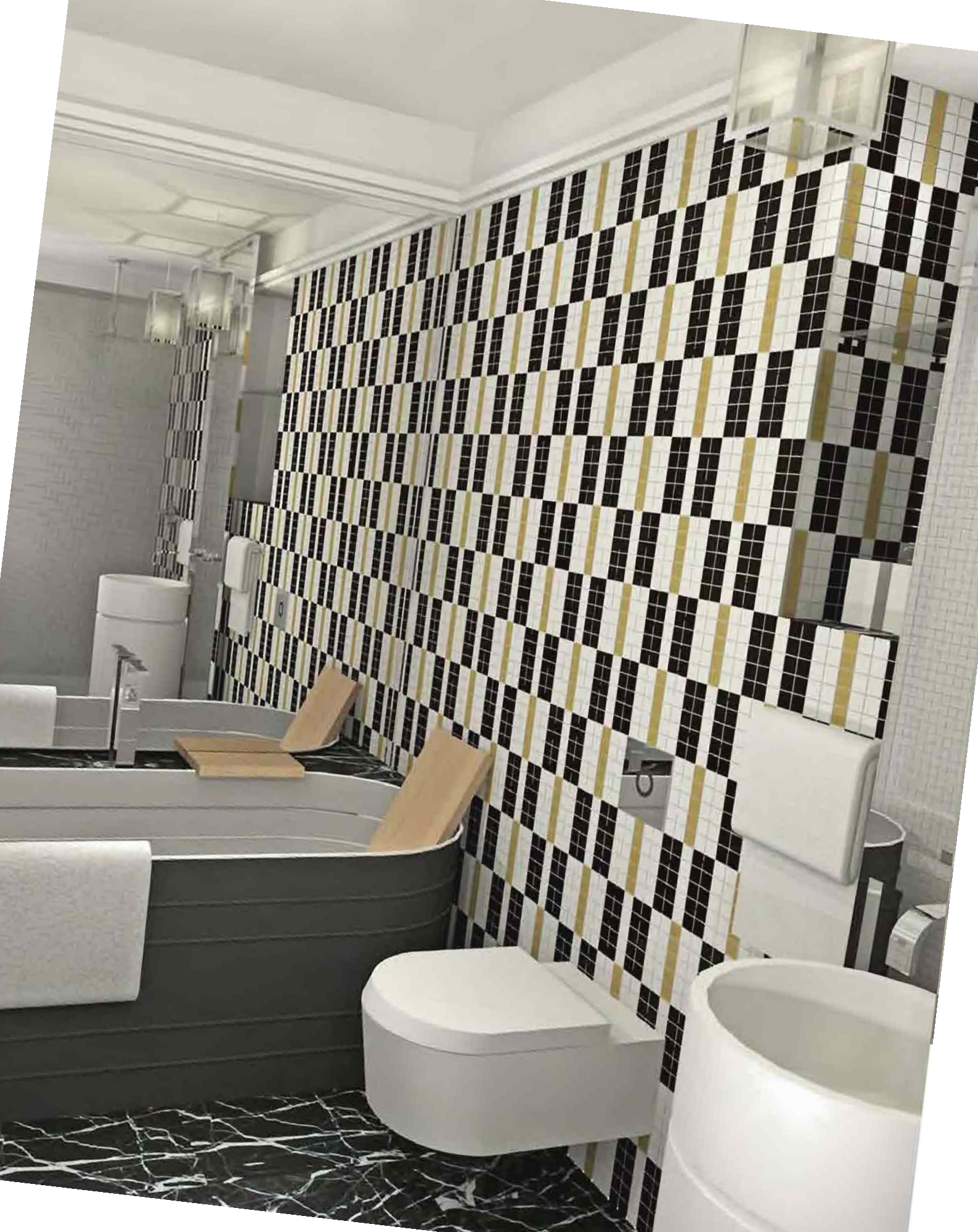
**The House of the Aesthetic Traveller**  
For inspiration we looked towards the notion of 'collecting' found in museums and galleries, referencing the Arts and Crafts movement in order to create a 'Mix Match' approach with a vibrant aesthetic direction, a careful luxury and an easy elegance. By referencing the artisan motifs found on the building's façade, the aim was to create an unusual and eclectic setting for guests, connecting the hotel's present with its past and bringing it up to date as a design-led hotel.

The hotel lobby is opened up to become a beautifully crafted series of interconnecting spaces, featuring vertical panelling, graphic marble and a new staircase down to basement level. For the bedrooms, the idea was that each one might have a different collection of fabrics and upholstery to make each space unique, while the bathrooms are monochrome with gold highlights.

T













## W Hotels

Black, white and gold, pillar box red and royal blue, the bedroom is evocative of London yet teasing.

Cool glamour and decadence inform the design defined by a now literal red carpet.

You open the door, you are confronted by your own reflection, a catwalk leading the eye to the totem mirror/TV, a reference to the world of the image, of transience, of performance.

Space pivots around a sculptural tower where lacquered panels and brass interplay to conceal wardrobe, cocktail cabinet and mini bar. The tower appears isolated - a frameless glass panel and concealed pocket door creating the illusion of bathroom continuous with bedroom, a shower open to the bed.

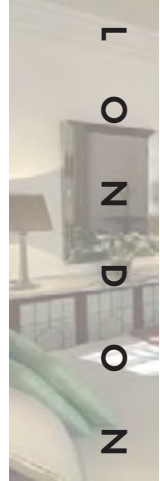
A clever use of mirror implies spaces beyond where fragmented reflections invite the guest to be voyeur in their own life.







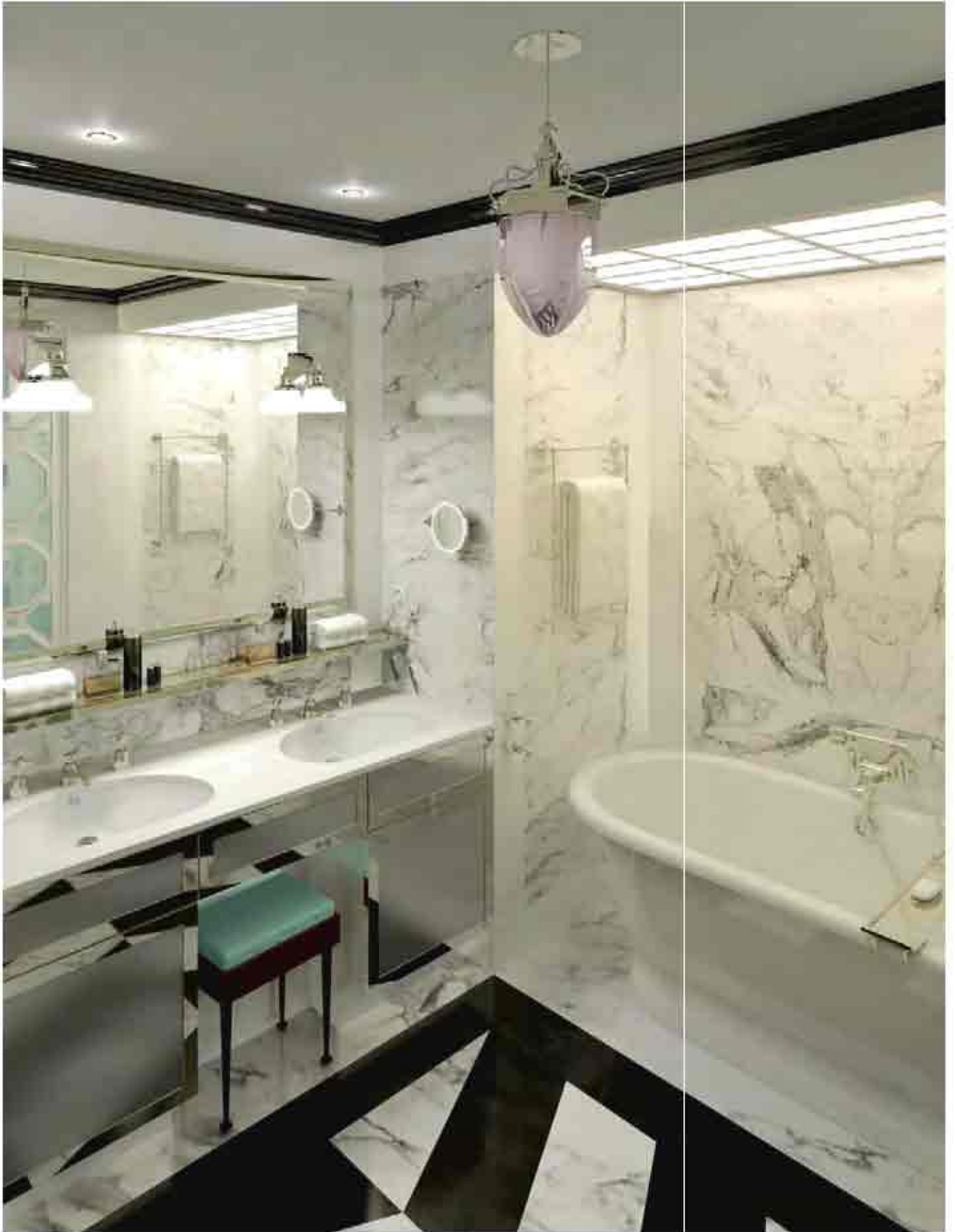




# The Poultry Hotel

Project Orange were commissioned in 2008 to collaborate in the refurbishment and conversion of Lutyens' Midland Bank into a luxury hotel. The concept for the new bedrooms and bathrooms draws its inspiration from the beautifully preserved original panelled rooms found on the fourth floor and originally designated as directors' offices. The aim is to create a sense of luxury and glamour within this prestigious building and to fuse the past with the present, offering outstanding service with style.

We have trodden carefully in order to suggest that the building was in fact always a hotel and that all we have done is to gently re-furbish a forgotten gem.







## Kilternan Hotel

The wooden door opens into a timber clad lobby, acting as a deep threshold to the bedroom. A welcome gust of cooling air greets me through the open window – I am reassured there is no air conditioning here. The first thing I notice is the quirky bed, slightly taller than my own, with solid chunky wooden posts and a green woolly rug across the end. To either side are a mismatched pair of antique bedside tables with two glass lamps on. The main bedroom is clad in a kind of rustic wood, giving it a cozy and natural feeling. Opposite the bed is a charming desk – it is modern but in a slightly 1950's way. I look out to the window through the billowing sheer curtain and realize that there is an extra space beyond; drawing the curtain back I enter into a fabric lined enclosed balcony.

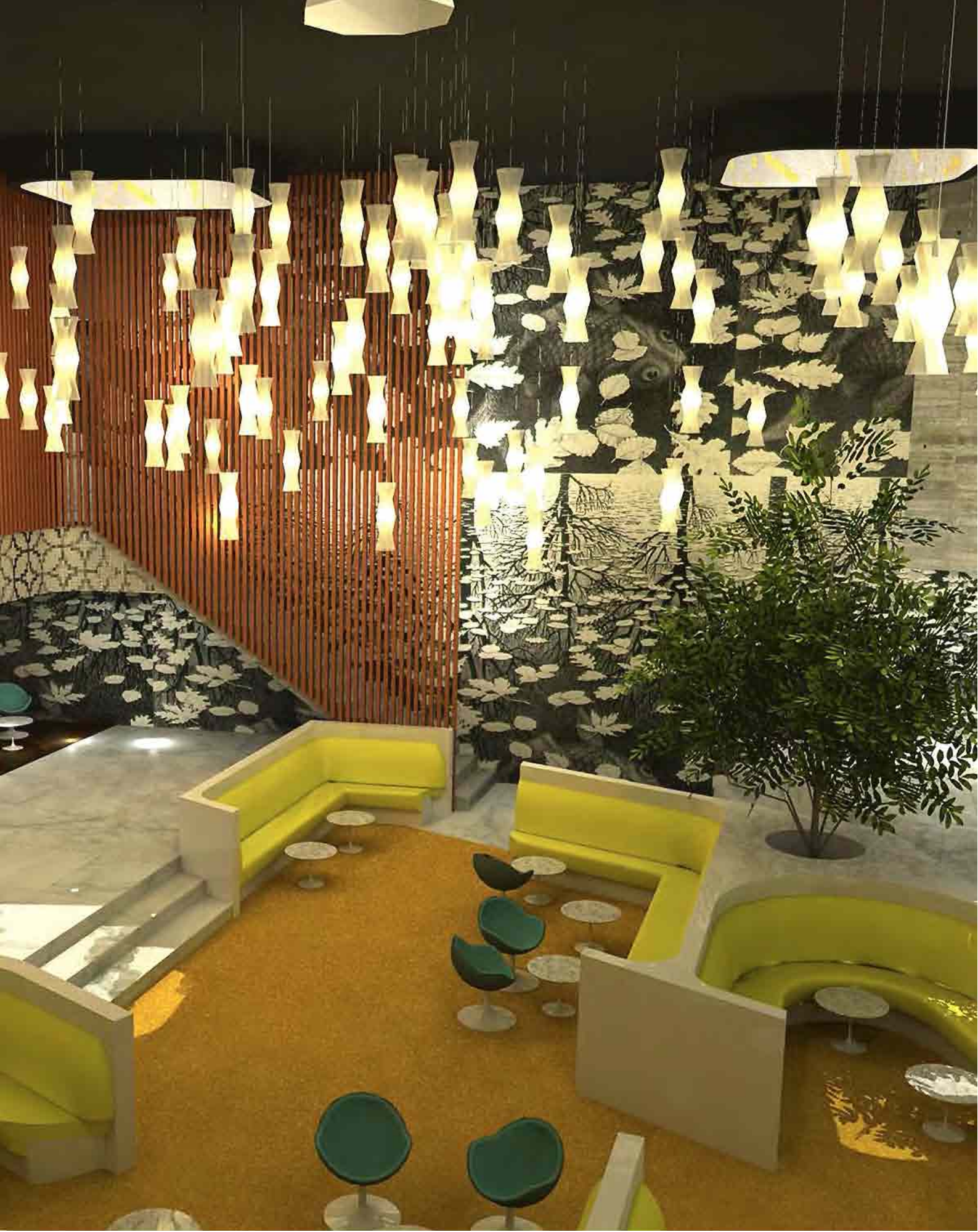
Two comfy chairs are arranged around a glass-topped table; one has wings and is covered in a tweedy yellow fabric, while the other is more sedate. The window fills the opening, although timber horizontal slats shade part of the view.

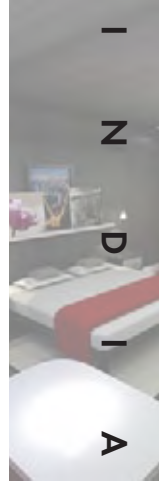
Venturing back in I slide open the tall wooden door to the bathroom - it feels very continental. The terrazzo floor is warm underfoot and the walls are clad in a contoured long chalky tile. A generous white circular washbasin is cantilevered off a timber wall and is topped by an extravagantly framed mirror. I catch a glance of a pair of shutters behind me above the bath. I open them into the bedroom and light floods in...







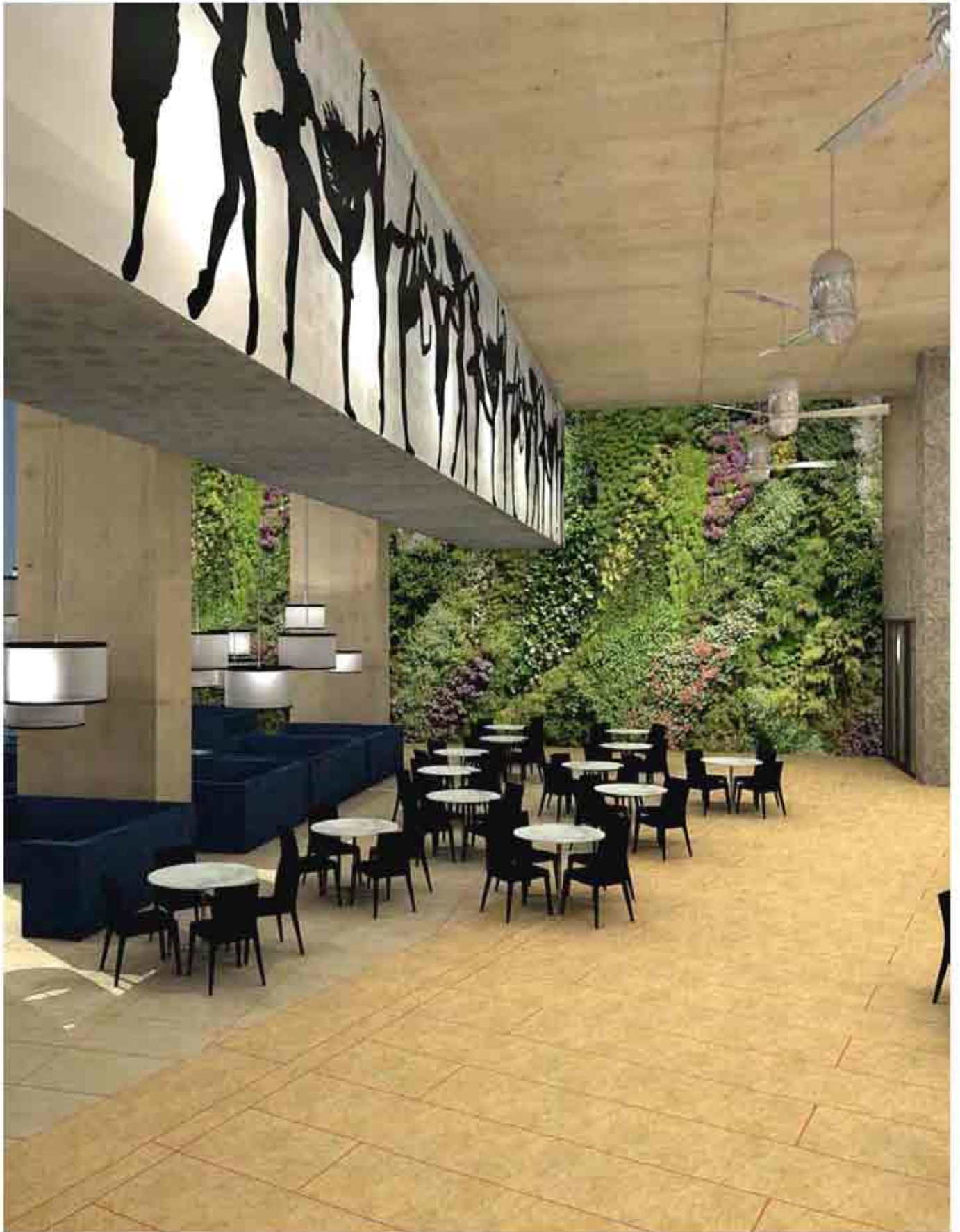




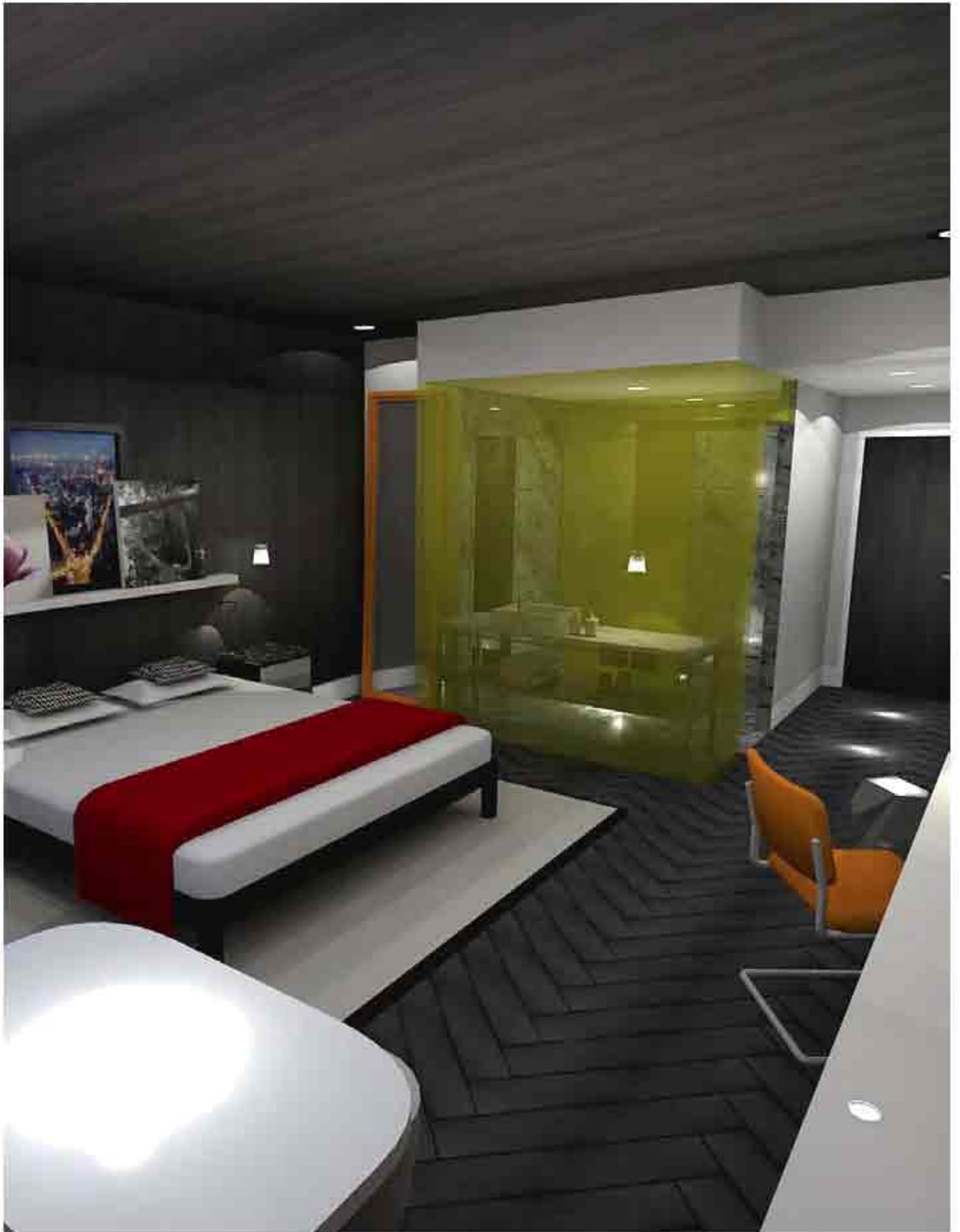
# The Park Hotel Pune

Project Orange have been appointed to work on this new project in India, due for completion in 2010. The location for the Park Hotel Pune is next to the Mutha River and in the heart of this historic city. Renowned as 'The Oxford of the East' and home to many universities and colleges our concept is to understand the hotel as a hub of knowledge. The building itself represents a 'campus' with the different faculties housed within. This narrative approach allows each space to express its own personality within the framework of the overall construct – both physical and intellectual. We also believe that a hotel is more than just a place to spend the night, but rather a Cultural Hub for locals and visitors alike.

This attitude is in line with the Park Hotels' progressive outlook and serves to strengthen the brand and create a point of difference with its competitors. It allows the hotel to become part of the community.











THE STEAMSHIP CO. OF U.S.A.

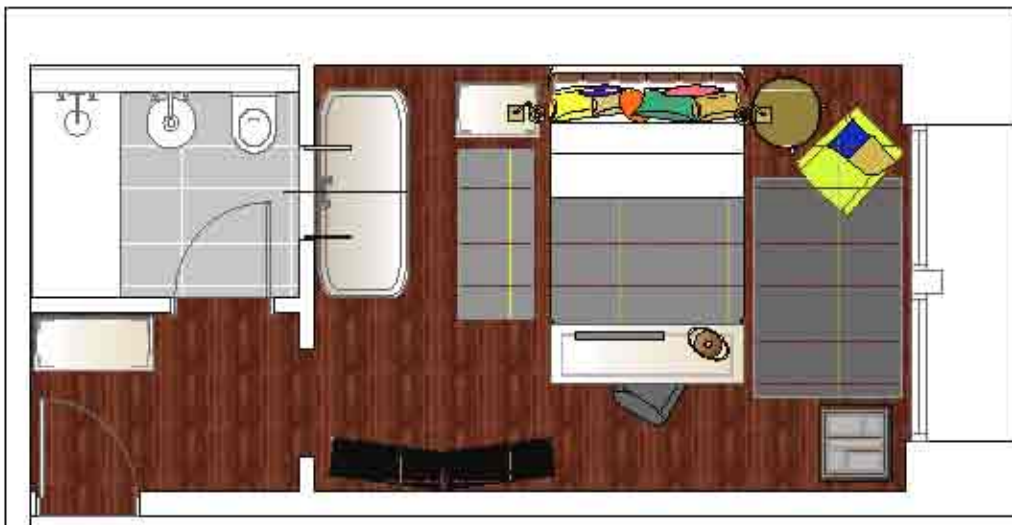
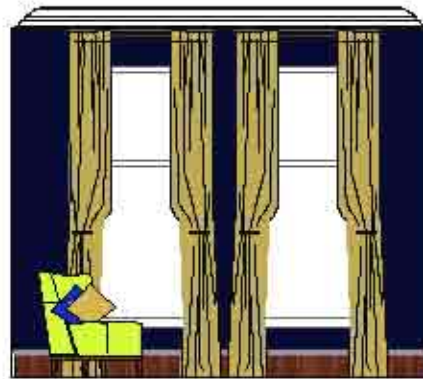




# King Street Hotel

The owner of the successful Match Bar Group, Jonathan Downey, asked Project Orange to help him with a hotel project on the other side of the world in Melbourne, Australia. The site is near the river on 27 King Street in the old Melbourne Steamship Company building.

The concept is to create an amazing restaurant and bar scene with rooms, topped with a private members' terrace. We were influenced by the history of the building and explored the idea of the bedrooms being 'unpacked' as though in the cabin of a steam liner – but using C21st materials and colours. There are even bedrooms with bunk beds allowing a more democratic spectrum of guests to enjoy staying in the hotel. On the ground floor a large bar and kitchen provides the theatre for the front of house, while in the basement the 'Milk and Honey' speak-easy bar is planned.



## Hotel Awards

2011 World Interiors Festival / commended / Hoxton Hotel  
2010 FX Awards / finalist: Hotel / Hoxton Hotel  
2009 BD Architect of the Year Awards / winner: Interior Designer of the Year  
2009 European Hotel Design Awards / short-listed: Restaurant / Fitzwilliam Hotel Belfast  
2008 FX Awards / finalist: Best Bar Interior / I-Bar  
2008 FX Awards / finalist: Best Hotel Interior / The Park Hotel  
2007 BD Architect of the Year Awards / winner: Interior Designer of the Year  
2007 Sleeper Awards / winner: Best Interior Design Hotel, Bar... / Eynsham Hall  
2007 FX Awards / highly commended: Best Hotel / Farnham House  
2007 FX Awards / finalist: Best Bar, Restaurant / Eynsham Hall  
2006 FX Awards / finalist: Best Hotel / Chiswick Moran Hotel  
2005 FX Awards / finalist: Best Hotel / Fitzwilliam Penthouse, Ireland

## Credits

### Photos by:

Pallon Daruwala  
Gareth Gardner  
Tony Higgings  
Ed Kingsford  
Richard Learoyd  
Barry Murphy  
Amit Pasrica  
Ali Rangoonwala

### Visualisations by:

Dom  
Minty  
Project Orange

### Project Orange team:

Abi  
Alesia  
Barry  
Christopher  
Guido  
James  
Rae  
Ruth  
Will

Copyright Project Orange 2012



Project Orange  
1st Floor Cosmopolitan House  
10A Christina Street  
London  
EC2A 4PA

† +44 20 7739 3035  
e mail@projectorange.com  
www.projectorange.com

