

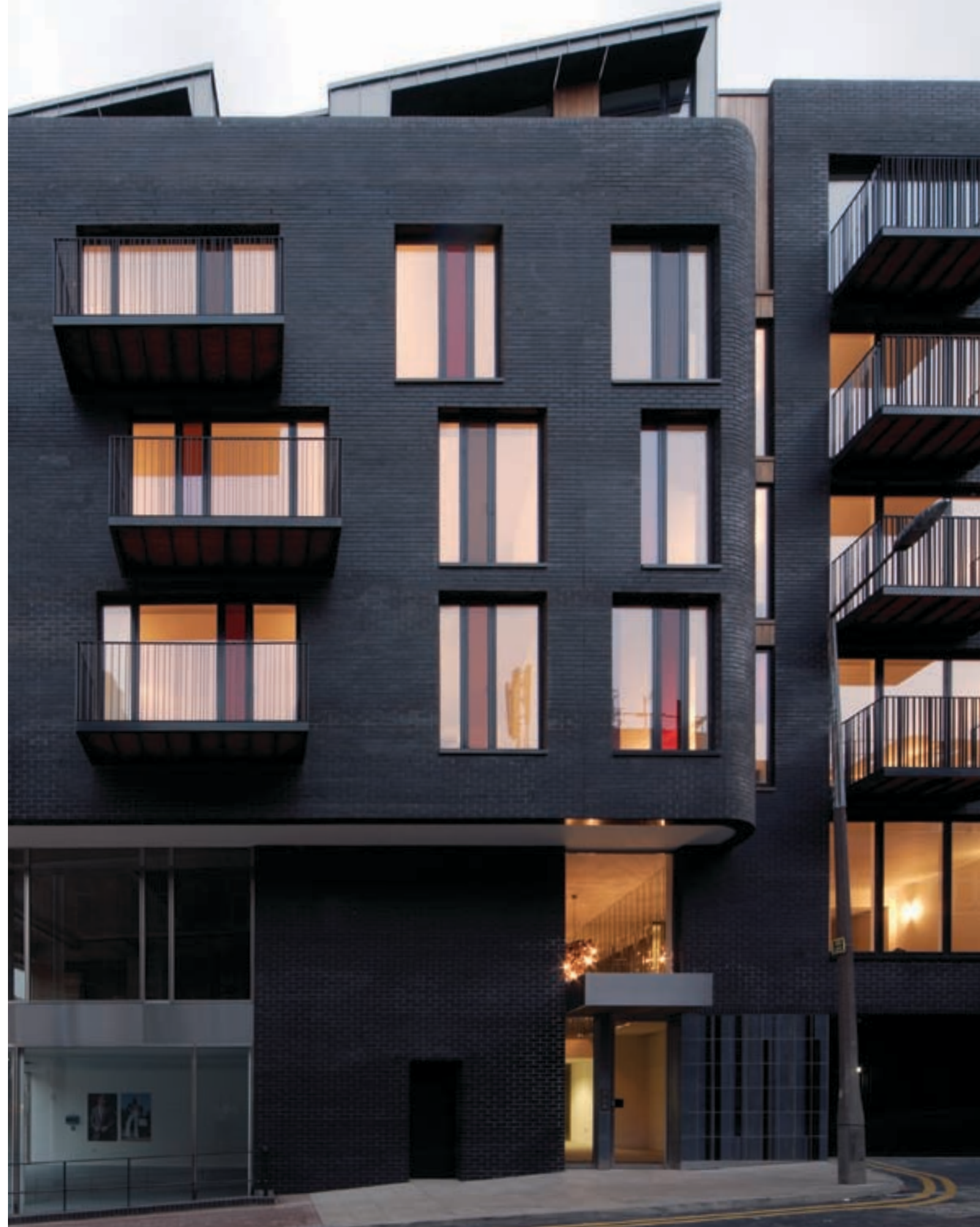


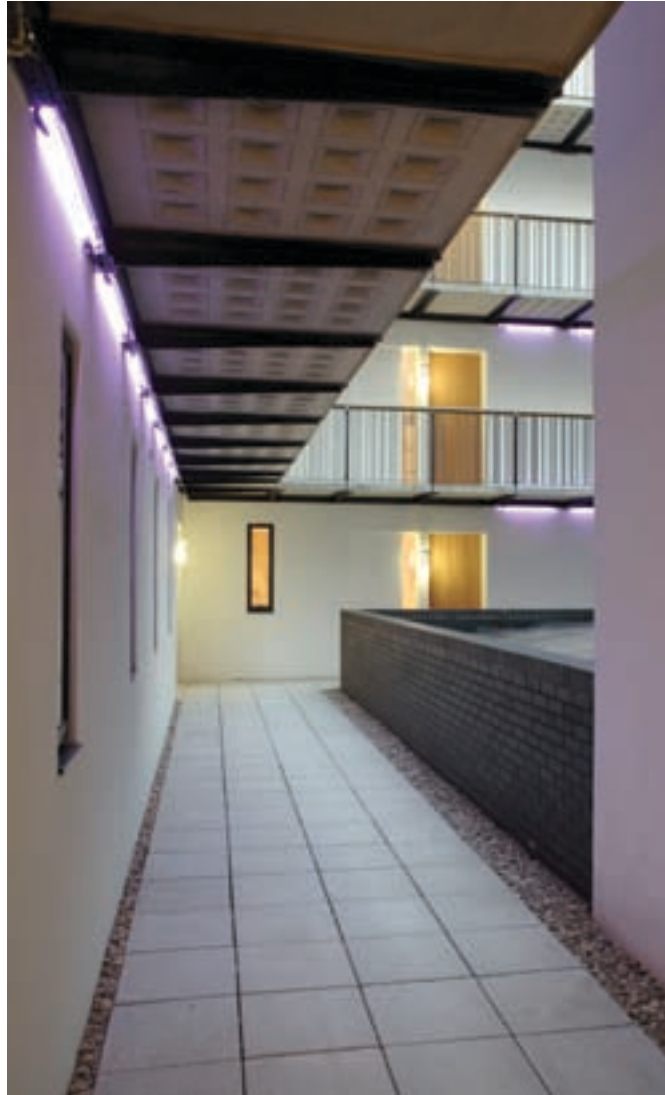
Project Orange
Catalogue #2
2004–2007

Ref. PO/CAT02

www.projectorange.com













































Index

2–7 266 Glossop Road. Sinclairs
2006, Sheffield

This new 5 story building houses 22 apartments and a 5,000 sqft retail footprint. It is built in black brick over a 2 storey fully glazed retail base. In 2007 it was awarded an RIBA National Award. The form of the building can be seen as a collision between two geometries; a flowing curvilinear fa ade meeting a rectilinear core.

8–11 Orange Cottage. Private
2007, Lavenham, Suffolk

Orange Cottage is a new-build 205 sqm timber framed house situated in the heart of the celebrated medieval village of Lavenham. The accommodation provides a fluid and open plan ground floor area with bedrooms and bathrooms above. The form of the house, with steeply pitched roof, references the local vernacular and continues a rhythm of cascading gables when viewed from the street. A palate of cream brick, oak joinery and muted colours unites the interior.

12–13 Gunroom Bar. Cathedral Group
2007, Eysham Hall, Oxford
The Gunroom fuses old with new, where traditional oak panelling is juxtaposed with canary yellow Chesterfield sofas.

14–17 Farnham Estate Hotel, Radisson SAS
2006, Farnham, Ireland
The fit-out of this extensive new build spa hotel included the refurbishment of the existing Georgian house to create a 158 bedroom luxury destination.

18–19 Smiths Wine Room, John Torode
2007, Smiths, London
A remodelling of the first floor to create the Wine Room. The linear white marble bar contrasts with the rustic oak wine wall and simple furniture.

20–23 Moran Chiswick Hotel, Moran Hotels
2006, Chiswick, London
‘West coast/West London’ was our concept for the new 120 room branded hotel, situated in a converted 1960’s office building in London.

24–25 Raoul’s, Michael and Gereldine Leventis
2006, Notting Hill, London
A new neighbourhood restaurant designed to be both bohemian and sophisticated.

26–29 St Pauls Place, Private
2006, Islington, London
A new zinc clad extension creates a fluid space for a terrazzo floored kitchen and informal dining room. The rest of this grade II listed house has been fully refurbished.

30–31 Nile Street, Private
2006, Shoreditch, London
A new roof top extension to this penthouse apartment created additional living area and a study. The existing spaces were all refurbished.

32–33 Fitzwilliam Hotel Penthouse, Fitzwilliam Hotel group
2005, Dublin, Ireland
The new-build 160sqm penthouse at the Fitzwilliam is where ‘Bond’ meets ‘Blofeld’. The striking sculptural ceiling creates a complex three-dimensional landscape.

34–37 Park Hotel Mumbai, Apeejay Surendra Hotels
2007, Navi Mumbai, India
The first design hotel in the city of Navi Mumbai features 80 rooms, two restaurants, a pool terrace and extensive banqueting. The concept fuses contemporary lines with traditional Indian crafts.

38–39 Redcliff Square, Private
2006, Kensington, London
A complete refurbishment of an unusual three storey roof top apartment features a new cantilevered stair to access the mezzanine above a reconfigured kitchen.

40–41 Bolton Gardens, Private
2006, Kensington, London
An existing mansard level apartment was reconstructed to exploit the volume of the original roof line to create an open plan living area and two bedrooms with bathrooms.

42–43 Monsoon Men, Monsoon PLC
2004, Covent Garden, London
This flagship store took the theme of ‘exotic travel’ and features a heavy beamed ceiling, Jali fretwork and Bollywood wall panels in the fitting rooms.

44–45 Spencer Road, Private
2005, Battersea, London
A dramatic black brick extension was added to the rear of a detached Victorian Villa to provide a new and sophisticated spatial connection between the living areas and garden.



Project Orange
Catalogue #2
2004–2007
Ref. PO/CAT02

www.projectorange.com

Photography: Gareth Gardener,
Richard Learoyd, Jonathan Pile,
Peter Grant, Amit Pasricha

Design: Studio Myerscough