

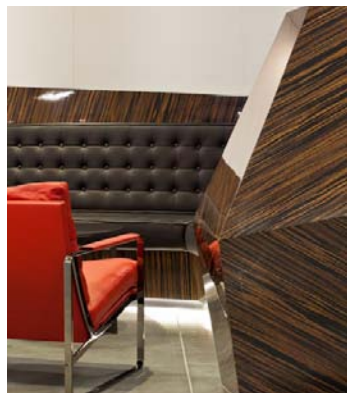


01

## 1 SHOREHAM STREET

*Mixed Use*

A former brick tram depot has been transformed into a mixed use office/retail scheme. The corrugated metal clad roof extension is a bold move, aimed at making a distinctive and optimistic gesture to the city.



## 2 ONE NEW CHANGE

*Office Reception*

We have been working with Land Securities to assist fitting out their lobby in the prestigious One New Change building in London. Our design took the plan of the building to generate a complex angular installation of highly polished Macassar wood that acts as a soft seating area as well as delineating the journey from security to the lift bank.  
[onenewchange.com](http://onenewchange.com)



## 3 MONSOON

*Restaurant*

In Bangalore, India, our fit out for the Monsoon Restaurant is a delightful moody space, which features 500 inlaid butterflies using local craftsmen. This is echoes by embroidery on the cushions.  
[theparkhotels.com](http://theparkhotels.com)



## 4 RIVERSIDE MANOR

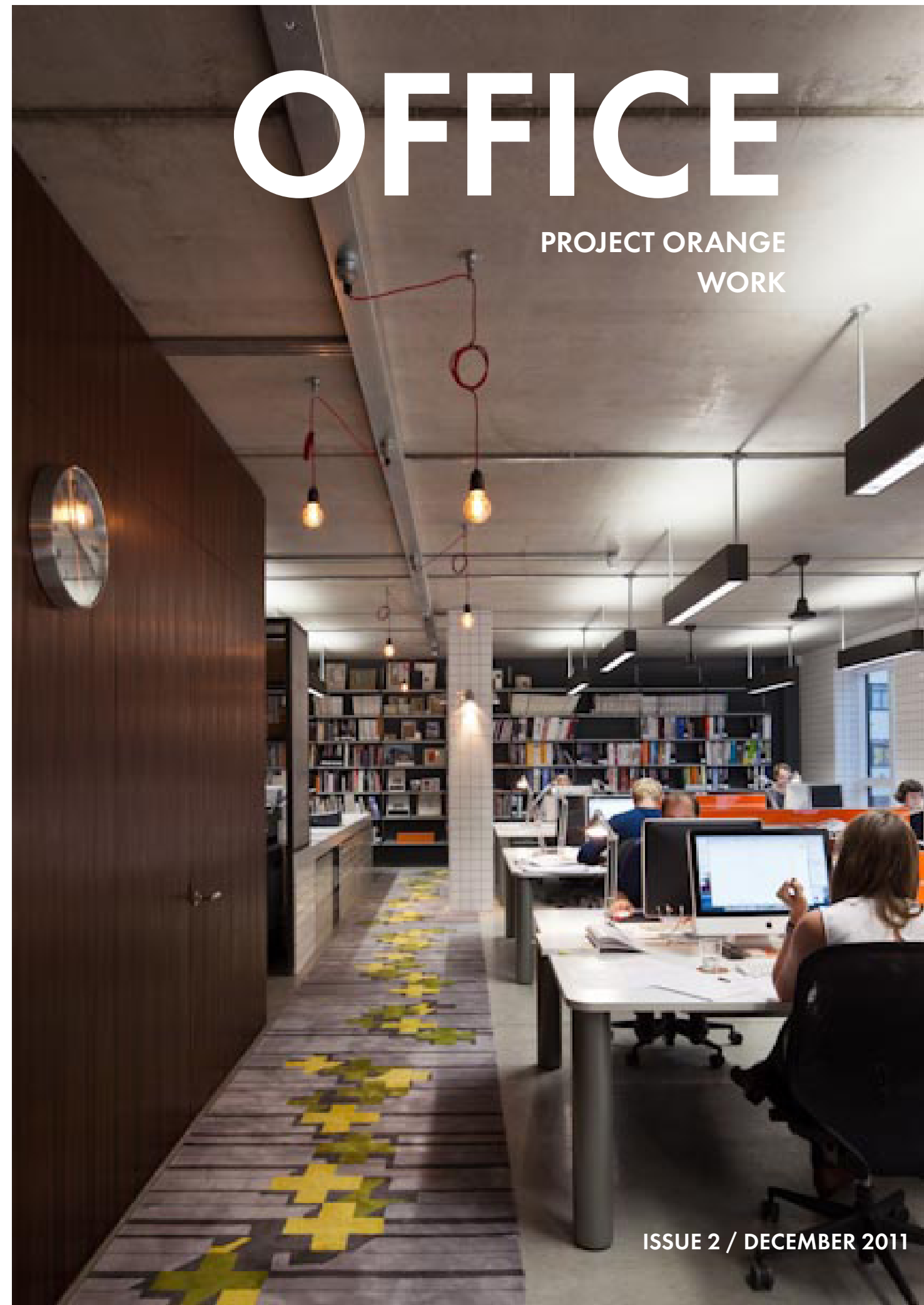
*Restoration Home*

The complex restoration of the main house dating back to C18th as well as the conversion of dilapidated stables. The project won best conversion at the 2011 British Home Awards.

Project Orange  
1st Floor, Cosmopolitan House  
10A Christina Street  
London EC2A 4PA  
T +44(0)20 7739 3035  
[www.projectorange.com](http://www.projectorange.com)



Project Orange Team Nov 2011  
Photos by Gareth Gardner



ISSUE 2 / DECEMBER 2011



# OUR STUDIO

Project Orange have been designing hotels around the world for over 10 years. We enjoy the challenge of different cultures, new places and contrasting briefs. Our philosophy is always to create an original hotel that combines inspired design with intelligent logistics. We also believe that the process is a collaboration between all parties, and that the conversations along the way inform the final results.

From rural retreats in Ireland to the busy Asian hub of Mumbai, our hotels exude confidence, maturity and excitement. Often we look to local crafts, materials and moods as a starting point for our concepts. In many ways each project unfolds like a chapter in a book of stories.

- Cover: View from front door
- Photocopier cage 01
- View into rustic kitchen 02
- View across to meeting room 03
- Main meeting room 04
- Break out space, lunch table 05
- Detail of light switches on smoked larch 06
- Detail of carpet 07
- Main filing wall 08
- Tiled layout space 09



01



02



03



04



05



06



07



08



09